

CLINKSMALES MAUGHAN-BROWN
CONSULTING MECHANICAL & ELECTRICAL ENGINEERS

PORT ELIZABETH
EAST LONDON
GEORGE
CAPE TOWN
WINHOUER
CLINKSMALES MAUGHAN-BROWN (SOUTH) (PTY) LTD (2012/075708/07)

39 Victoria St
George 6529
PO Box 2651
George 6530
Tel: +27 44 874 1511
Fax: +27 44 874 1510
cmb@cmbgeorge.co.za
www.clinkscales.co.za



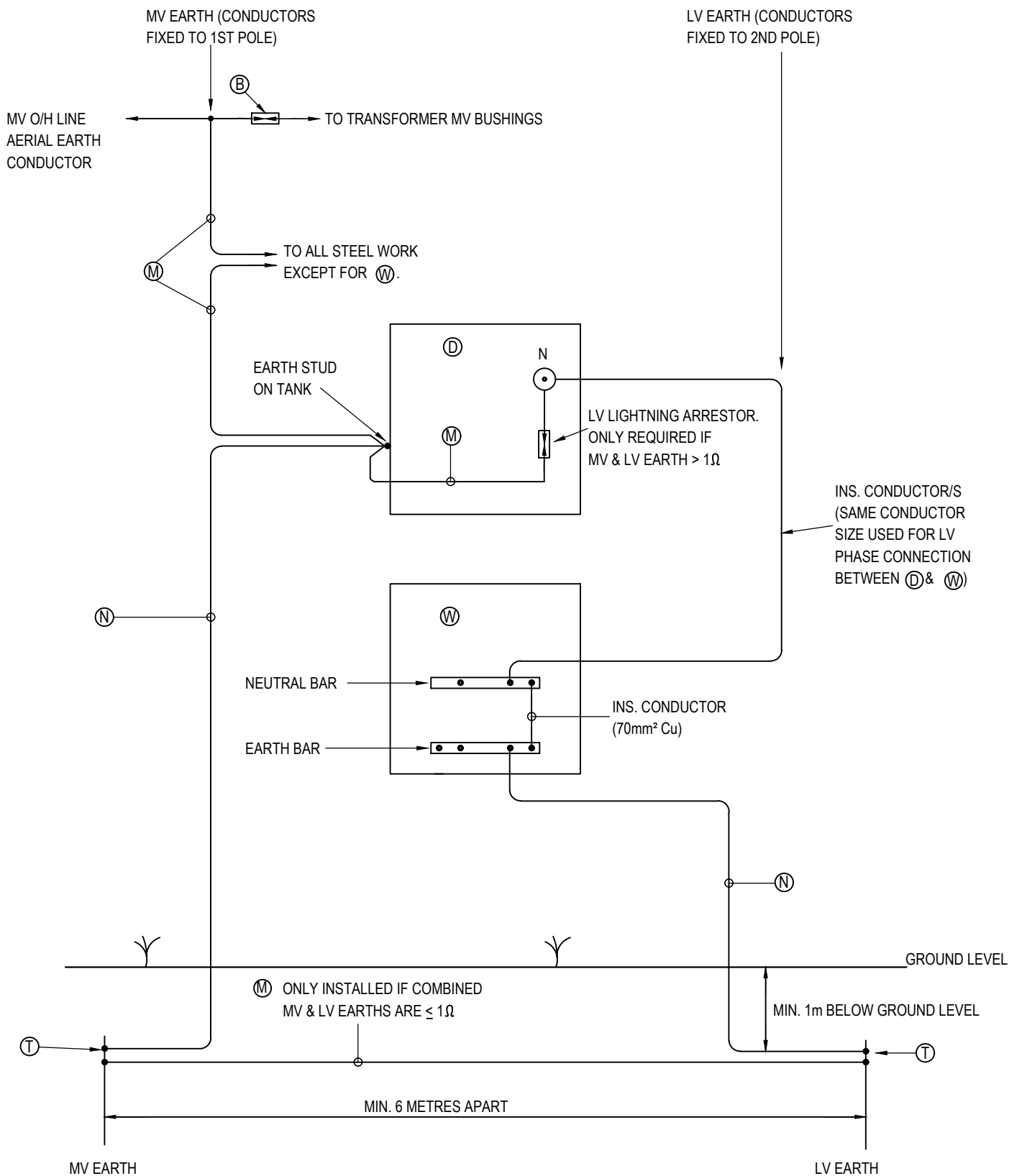
COPYRIGHT. ALL RIGHTS RESERVED.
NO PART OF THIS DOCUMENT MAY BE REPRODUCED OR TRANSMITTED IN ANY FORM
OR BY ANY MEANS, ELECTRICAL OR MECHANICAL, INCLUDING PHOTOCOPYING,
RECORDING OR ANY INFORMATION STORAGE AND RETRIEVAL SYSTEM, WITHOUT
PERMISSION IN WRITING FROM THE AUTHOR.

CLIENT
KOUGA MUNICIPALITY

PROJECT
**ELECTRIFICATION OF 259 HOUSES AT
KRUISFONTEIN IN HUMANSDORP
(DMRE WORK 2023/24)**

DRAWING TITLE
**TYPICAL 315kVA POLE MOUNTED
TRANSFORMER**

DRAWN MvM	DESIGNED GSA	CHECKED GSA	APPROVED
SCALE N.T.S.	DATE 15/05/2023	CAD REF No. 10599-E-DET	DWG-SIZE A4
DRAWING NO 10599/E/02			REVISION



NOTE: REFER TO DRAWING NO. 10599/E/04 FOR LEGEND



CLINKSCALES MAUGHAN-BROWN

CONSULTING MECHANICAL & ELECTRICAL ENGINEERS

PORT ELIZABETH
EAST LONDON

GEORGE

CAPE TOWN
WINHURGER

CESA
Creating Expertise. Doing Better.

39 Victoria St
George 6529
PO Box 2851
George 6530
Tel: +27 44 874 1511
Fax: +27 44 874 1510
cmb@cmbmaughanbrown.co.za
www.clinkscaldes.co.za

COPYRIGHT. ALL RIGHTS RESERVED.

NO PART OF THIS DOCUMENT MAY BE REPRODUCED OR TRANSMITTED IN ANY FORM OR BY ANY MEANS, ELECTRICAL OR MECHANICAL, INCLUDING PHOTOCOPYING, RECORDING OR ANY INFORMATION STORAGE AND RETRIEVAL SYSTEM, WITHOUT PERMISSION IN WRITING FROM THE AUTHOR.

CLIENT

KOUGA MUNICIPALITY

PROJECT

**ELECTRIFICATION OF 259 HOUSES AT
KRUISFONTEIN IN HUMANSDORP
(DMRE WORK 2023/24)**

DRAWING TITLE

**TYPICAL POLE MOUNTED TRANSFORMER
EARTHING DIAGRAM**

DRAWN

MvM

DESIGNED

GSA

CHECKED

GSA

APPROVED

SCALE

N.T.S.

DATE

15/05/2023

CAD REF No.

10599-E-DET

DWG-SIZE

A4

DRAWING NO

10599/E/03

REVISION

LEGEND

- (A) MV STRAIN INSULATOR
- (B) MV LIGHTNING ARRESTOR
- (C) MV EXPULSION FUSES
- (D) MV TO 420/240V POLE MOUNTED TRANSFORMER SUBSTATION
- (E) 200 x 75 x 25 GALVANISED CHANNEL IRON
- (F) 160 x 65 x 19 GALVANISED CHANNEL IRON
- (G) 100 x 50 x 6mm GALVANISED CHANNEL IRON
- (H) 50 x 12mm GALVANISED SLOT IRON
- (J) 100 x 50 x 11mm GALVANISED ANGLE IRON
- (K) MV OVERHEAD LINE CONDUCTOR
- (L) SUBSTATION DESIGNATION BOARD
- (M) 70mm² BARE HARD DRAWN Cu EARTH CONDUCTOR
- (N) 70mm² Cu BLACK PVC INSULATED EARTH CONDUCTOR
PROTECTED WITH 32mm DIAM. GALVANISED STEEL
KICKER PIPE FROM 500mm BELOW TO 3.5m ABOVE GROUND LEVEL.
- (P) STRUT POLE
- (Q) BARBED WIRE TWISTED AROUND POLES
- (R) DANGER NOTICE
- (S) 100 x 50mm GALVANISED CHANNEL STAND-OFF BRACKET
FOR EXPULSION FUSES
- (T) EARTH SPIKES
- (U) CABLE MARKER LABELLED "EARTH SPIKE"
- (W) LV DISTRIBUTION BOX
- (Y) LV BUNDLED CONDUCTOR / LV PVCAS CABLE
- (AA) PHOTO-CELL
- (BB) MV UNDERGROUND CABLE
- (CC) 600 x 600 x 200mm CONCRETE FOOT
- (DD) 100 x 50 x 11 GALVANISED CHANNEL IRON
- (EE) SINGLE/DOUBLE STRAIN A-FRAME
- (HH) 25mm² Cu XLPE INSULATED CONNECTIONS WITH UV STABLE PVC OUTER SHEATH.
- (JJ) MV UNDERGROUND CABLE
- (NN) WOODEN SPACER FOR MV UNDERGROUND CABLE

NOTES:

- ① MINIMUM CLEARANCE BETWEEN: 22kV PHASE AND EARTH - 320mm
22kV PHASES - 430mm
11kV PHASE AND EARTH - 200mm
11kV PHASES - 270mm
- ② INSTALL BUNDLED CONDUCTOR IN BLACK PVC SLEEVE WHERE IT IS
STRAPPED TO POLES AND WHERE IT IS IN CONTACT WITH STAY WIRE.
- ③ ALL BOLTS TO BE M20 & GALVANISED
- ④ REFER TO DRAWING NO'S 10599/E/02 & 03.



CLINKSCALES MAUGHAN-BROWN
CONSULTING MECHANICAL & ELECTRICAL ENGINEERS

PORT ELIZABETH
EAST LONDON
GEORGE
CLINKSCALES MAUGHAN-BROWN (SOUTH) (PTY) LTD (2012/075708/07)

39 Victoria St
George 6529
PO Box 2851
George 6530
Tel: +27 44 874 1511
Fax: +27 44 874 1510
cmb@cmbgeorge.co.za
www.clinkscases.co.za



COPYRIGHT. ALL RIGHTS RESERVED.
NO PART OF THIS DOCUMENT MAY BE REPRODUCED OR TRANSMITTED IN ANY FORM
OR BY ANY MEANS, ELECTRICAL OR MECHANICAL, INCLUDING PHOTOCOPYING,
RECORDING OR ANY INFORMATION STORAGE AND RETRIEVAL SYSTEM, WITHOUT
PERMISSION IN WRITING FROM THE AUTHOR.

CLIENT

KOUGA MUNICIPALITY

PROJECT

**ELECTRIFICATION OF 259 HOUSES AT
KRUISFONTEIN IN HUMANSDORP
(DMRE WORK 2023/24)**

DRAWING TITLE

**POLE MOUNTED TRANSFORMER
LEGEND AND NOTES**

DRAWN

MvM

DESIGNED

GSA

CHECKED

GSA

APPROVED

SCALE

N.T.S.

DATE

15/05/2023

CAD REF No.

10599-E-DET

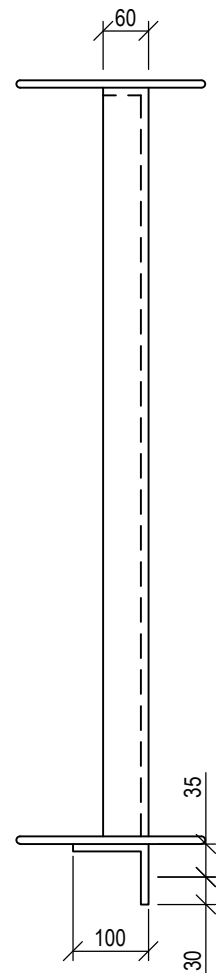
DWG-SIZE

A4

DRAWING NO

10599/E/04

REVISION



END ELEV.



PORT ELIZABETH
EAST LONDON

39 Victoria St
George 6529
PO Box 2551
George 6530
Tel: + 27 44 874 1511
Fax: + 27 44 874 1510
cmb@cmbgeorge.co.za
www.clinkscales.co.za

NO PART OF THIS DOCUMENT MAY BE REPRODUCED OR TRANSMITTED IN ANY FORM OR BY ANY MEANS, ELECTRICAL OR MECHANICAL, INCLUDING PHOTOCOPYING, RECORDING OR ANY INFORMATION STORAGE AND RETRIEVAL SYSTEM, WITHOUT PERMISSION IN WRITING FROM THE AUTHOR.

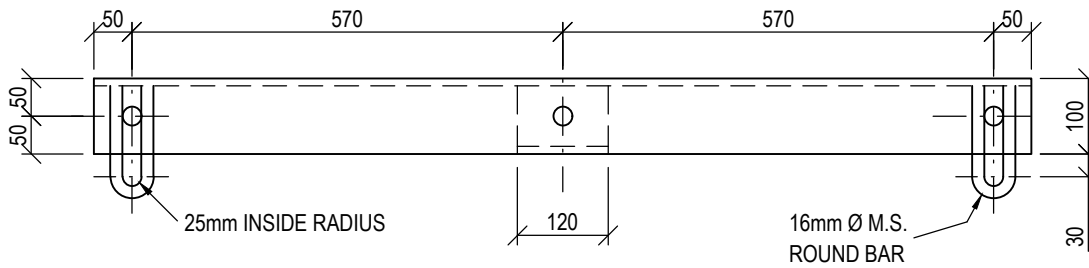
KOUGA MUNICIPALITY

**ELECTRIFICATION OF 259 HOUSES AT
KRUISFONTEIN IN HUMANSDORP
(DMRE WORK 2023/24)**

**11/22kV O/H LINE: "A" FRAME FOR
SINGLE/DOUBLE STRAIN POLES**

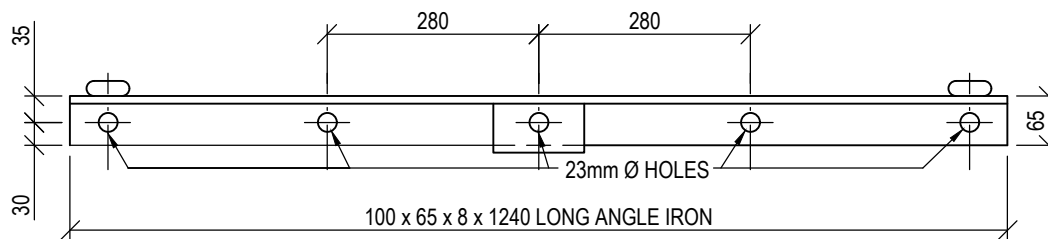
10599/E/05

REVISION

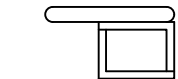


PLAN

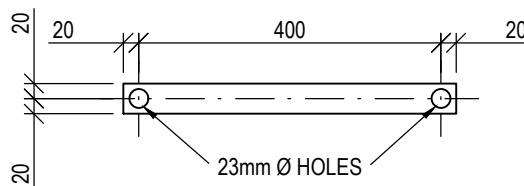
ALL HOLES 25mm Ø
UNLESS OTHERWISE SHOWN



FRONT ELEVATION



END ELEVATION



KNEE-BRACE FOR ANGLE CROSS-ARM

NOTE: STEELWORK TO BE HOT DIP GALVANISED AFTER MANUFACTURE



CLINKSCALES MAUGHAN-BROWN

CONSULTING MECHANICAL & ELECTRICAL ENGINEERS

PORT ELIZABETH EAST LONDON GEORGE CAPE TOWN WINHURGER

39 Victoria St
George 6529
PO Box 2651
George 6520
Tel: +27 44 874 1511
Fax: +27 44 874 1510
cmb@cmbgeorge.co.za
www.clinkcales.co.za



COPYRIGHT. ALL RIGHTS RESERVED.
NO PART OF THIS DOCUMENT MAY BE REPRODUCED OR TRANSMITTED IN ANY FORM OR BY ANY MEANS, ELECTRICAL OR MECHANICAL, INCLUDING PHOTOCOPYING, RECORDING OR ANY INFORMATION STORAGE AND RETRIEVAL SYSTEM, WITHOUT PERMISSION IN WRITING FROM THE AUTHOR.

CLIENT

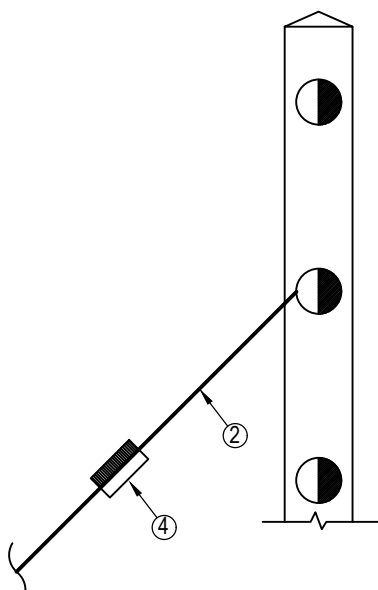
KOUGA MUNICIPALITY

PROJECT
ELECTRIFICATION OF 259 HOUSES AT KRUISFONTEIN IN HUMANSDORP (DMRE WORK 2023/24)

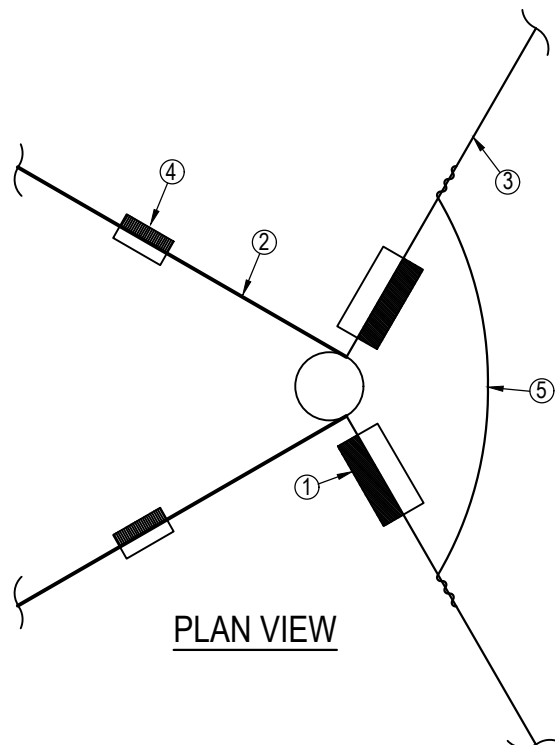
DRAWING TITLE

11/22kV O/H LINE: CROSS-ARM FOR USE WITH "A" FRAME AT TEE-OFF'S AND RIGHT ANGLE TURNS

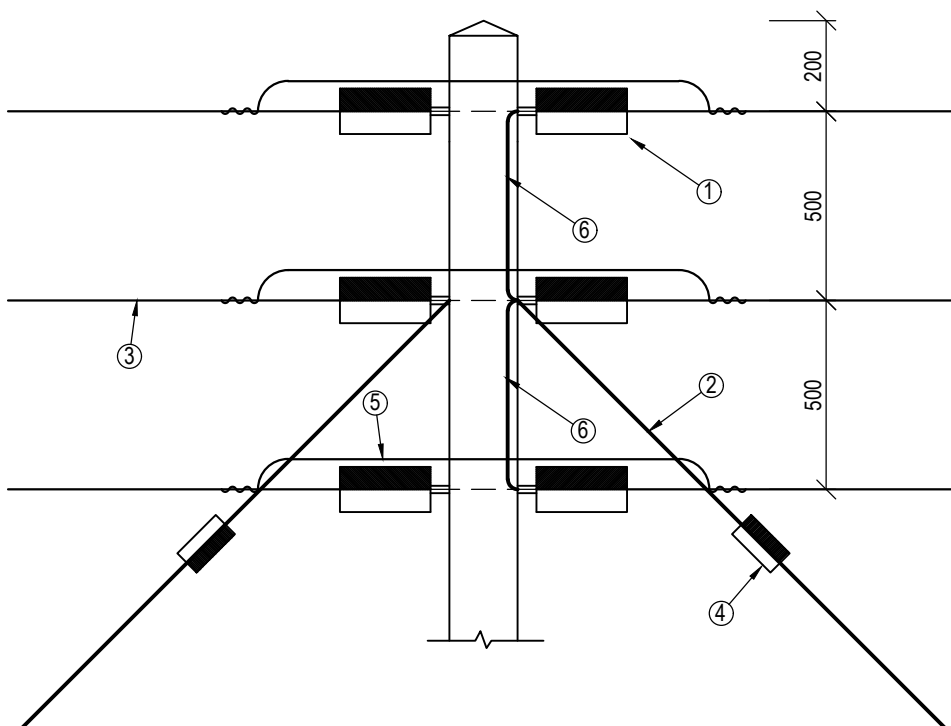
DRAWN MvM	DESIGNED GSA	CHECKED GSA	APPROVED
SCALE N.T.S.	DATE 15/05/2023	CAD REF No. 10599-E-DET	DWG-SIZE A4
DRAWING NO 10599/E/06			REVISION



SIDE ELEVATION



PLAN VIEW



FRONT ELEVATION

LEGEND

- ① STRAIN INSULATORS
SEE DETAILED SPEC.
- ② STAY WIRE
- ③ OVERHEAD LINE
CONDUCTOR
- ④ STAY INSULATOR
- ⑤ JUMPER
- ⑥ 16mm² (3/2,65mm) HD BARE Cu
CONDUCTOR BONDING HARDWARE



CLINKSCALES MAUGHAN-BROWN
CONSULTING MECHANICAL & ELECTRICAL ENGINEERS

PORT ELIZABETH
EAST LONDON
GEORGE
CLINKSCALES MAUGHAN BROWN (SOUTH) (PTY) LTD (2012/075708/07)

39 Victoria St
George 6529
PO Box 2651
George 6530
Tel: +27 44 874 1511
Fax: +27 44 874 1510
cmb@cmbgeorge.co.za
www.clinkcales.co.za



COPYRIGHT. ALL RIGHTS RESERVED.

NO PART OF THIS DOCUMENT MAY BE REPRODUCED OR TRANSMITTED IN ANY FORM
OR BY ANY MEANS, ELECTRICAL OR MECHANICAL, INCLUDING PHOTOCOPYING,
RECORDING OR ANY INFORMATION STORAGE AND RETRIEVAL SYSTEM, WITHOUT
PERMISSION IN WRITING FROM THE AUTHOR.

CLIENT

KOUGA MUNICIPALITY

PROJECT

**ELECTRIFICATION OF 259 HOUSES AT
KRUISFONTEIN IN HUMANSDORP
(DMRE WORK 2023/24)**

DRAWING TITLE

**22kV STRAIN STRUCTURE FOR
VERTICAL CONSTRUCTION**

DRAWN

MvM

DESIGNED

GSA

CHECKED

GSA

APPROVED

SCALE

N.T.S.

DATE

15/05/2023

CAD REF No.

10599-E-DET

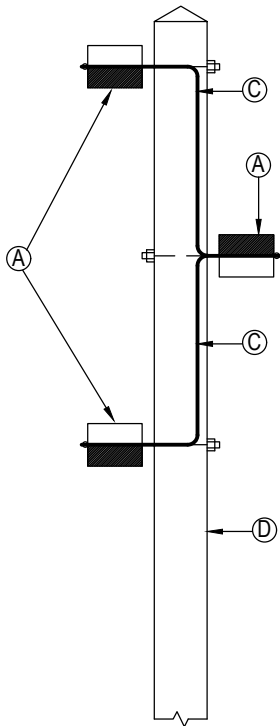
DWG-SIZE

A4

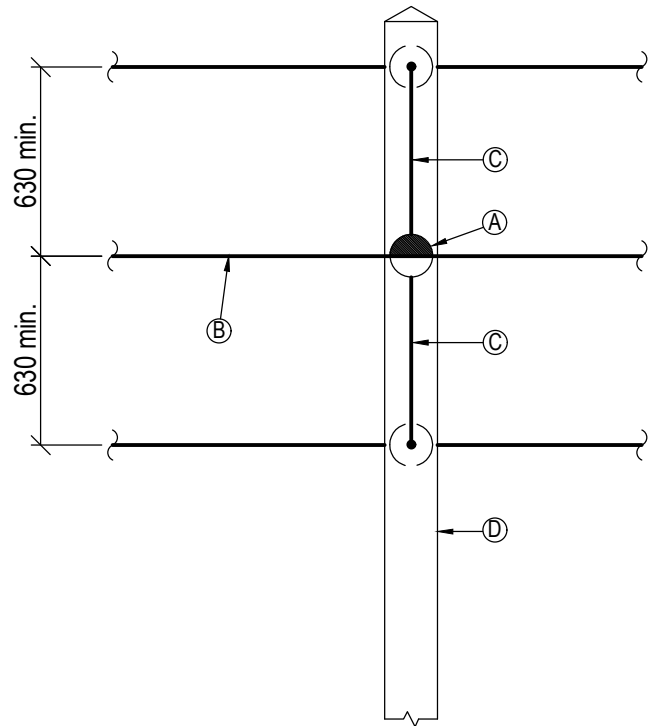
DRAWING NO

10599/E/07

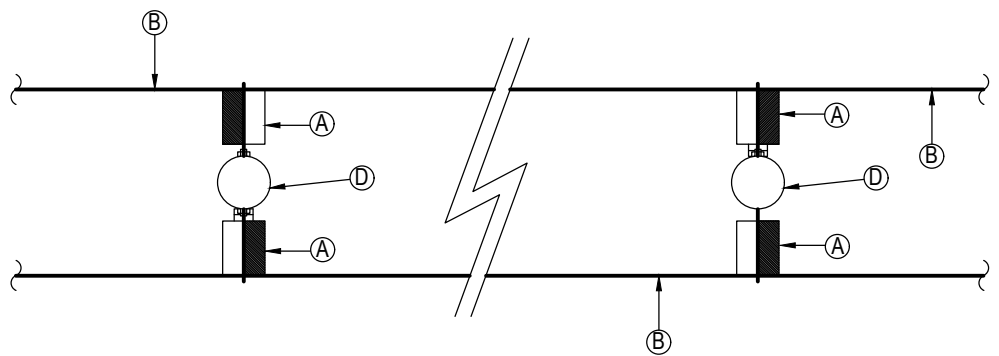
REVISION



SIDE ELEVATION



FRONT ELEVATION



LEGEND

- (A) 22kV LINE POST INSULATOR
- (B) 22kV O/H LINE CONDUCTOR
- (C) 16mm² (3/2,65mm) HD BARE Cu CONDUCTOR
BONDING HARDWARE
- (D) POLE



CLINKSCALES MAUGHAN-BROWN

CONSULTING MECHANICAL & ELECTRICAL ENGINEERS

PORT ELIZABETH
EAST LONDON

GEORGE

CAPE TOWN
WINHURGER

39 Victoria St
George 6529
PO Box 2651
George 6530
Tel: +27 44 874 1511
Fax: +27 44 874 1510
cmb@cmbgeorge.co.za
www.clinkcales.co.za

CESA
Quality Engineers South Africa

COPYRIGHT. ALL RIGHTS RESERVED.

NO PART OF THIS DOCUMENT MAY BE REPRODUCED OR TRANSMITTED IN ANY FORM OR BY ANY MEANS, ELECTRICAL OR MECHANICAL, INCLUDING PHOTOCOPYING, RECORDING OR ANY INFORMATION STORAGE AND RETRIEVAL SYSTEM, WITHOUT PERMISSION IN WRITING FROM THE AUTHOR.

CLIENT

KOUGA MUNICIPALITY

PROJECT

**ELECTRIFICATION OF 259 HOUSES AT
KRUISFONTEIN IN HUMANSDORP
(DMRE WORK 2023/24)**

DRAWING TITLE

**22kV INTERMEDIATE STRUCTURE FOR
VERTICAL CONSTRUCTION**

DRAWN

MvM

DESIGNED

GSA

CHECKED

GSA

APPROVED

SCALE

N.T.S.

DATE

15/05/2023

CAD REF No.

10599-E-DET

DWG-SIZE

A4

DRAWING NO

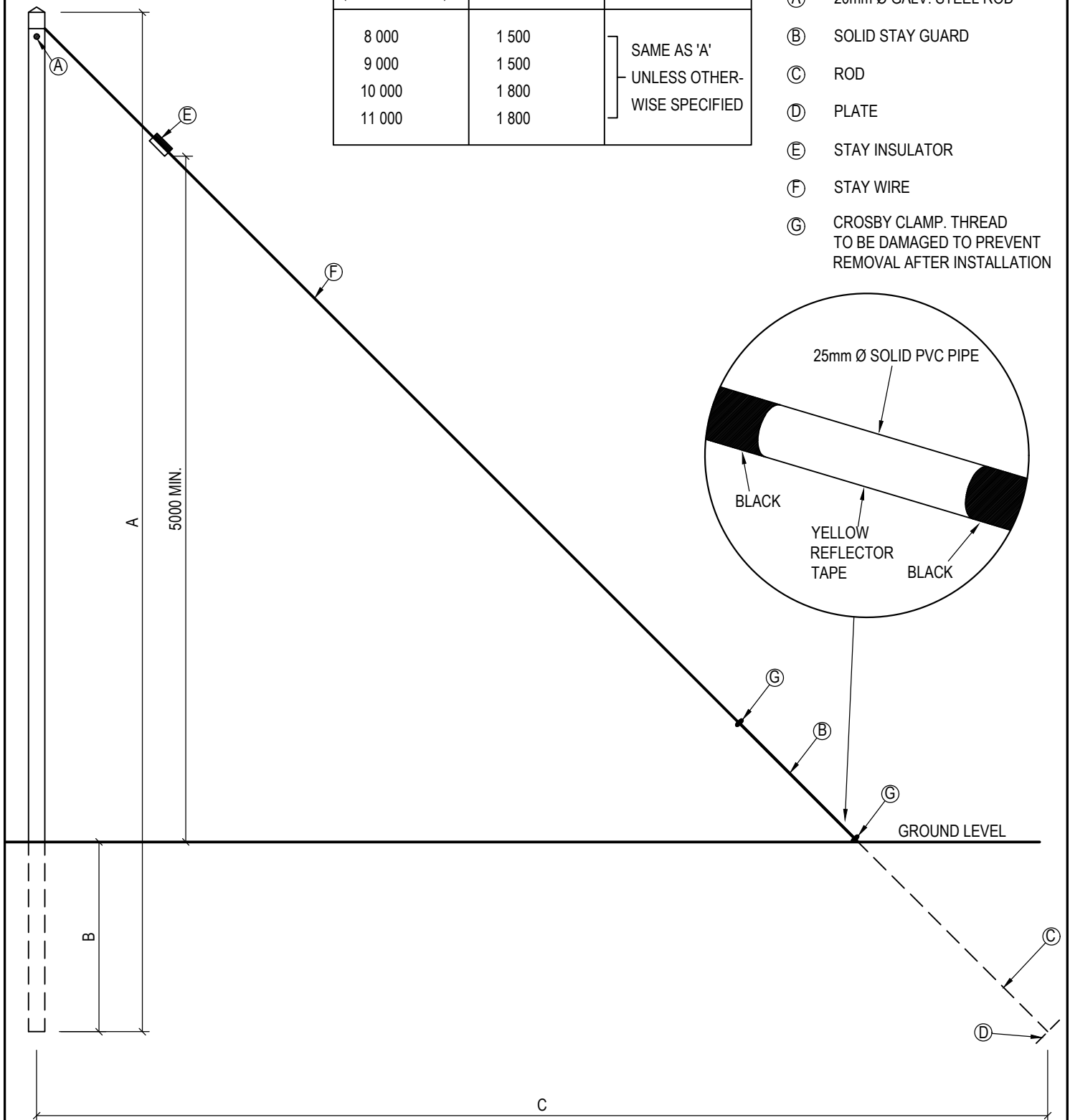
10599/E/08

REVISION

DIMENSIONS (MILLIMETRES)		
A (POLE LENGTH)	B	C
8 000	1 500	SAME AS 'A' UNLESS OTHER- WISE SPECIFIED
9 000	1 500	
10 000	1 800	
11 000	1 800	

LEGEND

- (A) 20mm Ø GALV. STEEL ROD
- (B) SOLID STAY GUARD
- (C) ROD
- (D) PLATE
- (E) STAY INSULATOR
- (F) STAY WIRE
- (G) CROSBY CLAMP. THREAD TO BE DAMAGED TO PREVENT REMOVAL AFTER INSTALLATION



CLINKSCALES MAUGHAN-BROWN

CONSULTING MECHANICAL & ELECTRICAL ENGINEERS

PORT ELIZABETH
EAST LONDON

GEORGE

CAPE TOWN
WINHOUK

CESA
Quality Engineers South Africa

39 Victoria St
George 6529
PO Box 2651
George 6530
Tel: +27 44 874 1511
Fax: +27 44 874 1510
cmb@cmbgeorge.co.za
www.clinkscases.co.za

COPYRIGHT. ALL RIGHTS RESERVED.

NO PART OF THIS DOCUMENT MAY BE REPRODUCED OR TRANSMITTED IN ANY FORM OR BY ANY MEANS, ELECTRICAL OR MECHANICAL, INCLUDING PHOTOCOPYING, RECORDING OR ANY INFORMATION STORAGE AND RETRIEVAL SYSTEM, WITHOUT PERMISSION IN WRITING FROM THE AUTHOR.

CLIENT

KOUGA MUNICIPALITY

PROJECT

**ELECTRIFICATION OF 259 HOUSES AT
KRUISFONTEIN IN HUMANSDORP
(DMRE WORK 2023/24)**

DRAWING TITLE

**MV / LV O/H LINE:
SINGLE STAY STRUCTURE**

DRAWN

MvM

DESIGNED

GSA

CHECKED

GSA

APPROVED

SCALE

N.T.S.

DATE

15/05/2023

CAD REF No.

10599-E-DET

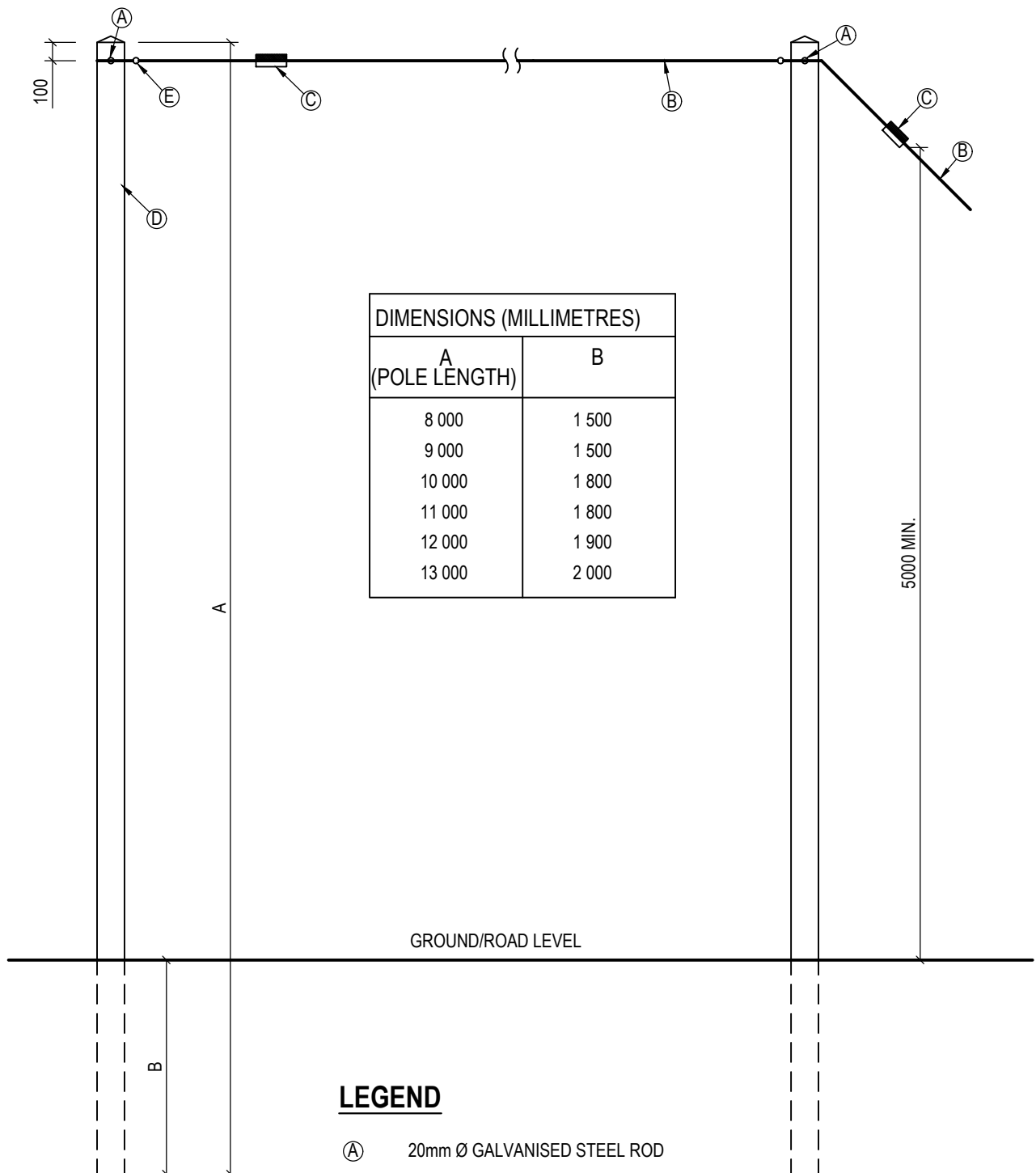
DWG-SIZE

A4

DRAWING NO

10599/E/09

REVISION



LEGEND

- Ⓐ 20mm Ø GALVANISED STEEL ROD
- Ⓑ STAY WIRE
- Ⓒ STAY INSULATOR
- Ⓓ STRAIN POLE
- Ⓔ EYE BOLT



CLINKSCALES MAUGHAN-BROWN

CONSULTING MECHANICAL & ELECTRICAL ENGINEERS

PORT ELIZABETH
EAST LONDON

GEORGE

CAPE TOWN
WINHURGER

39 Victoria St
George 6520
PO Box 2551
George 6520
Tel: +27 44 874 1511
Fax: +27 44 874 1510
cmb@cmbgeorge.co.za
www.clinkscases.co.za



COPYRIGHT. ALL RIGHTS RESERVED.

NO PART OF THIS DOCUMENT MAY BE REPRODUCED OR TRANSMITTED IN ANY FORM OR BY ANY MEANS, ELECTRICAL OR MECHANICAL, INCLUDING PHOTOCOPYING, RECORDING OR ANY INFORMATION STORAGE AND RETRIEVAL SYSTEM, WITHOUT PERMISSION IN WRITING FROM THE AUTHOR.

CLIENT

KOUGA MUNICIPALITY

PROJECT

**ELECTRIFICATION OF 259 HOUSES AT
KRUISFONTEIN IN HUMANSDORP
(DMRE WORK 2023/24)**

DRAWING TITLE

**MV / LV O/H LINE:
FLYING STAY STRUCTURE**

DRAWN

MvM

DESIGNED

GSA

CHECKED

GSA

APPROVED

SCALE

N.T.S.

DATE

15/05/2023

CAD REF No.

10599-E-DET

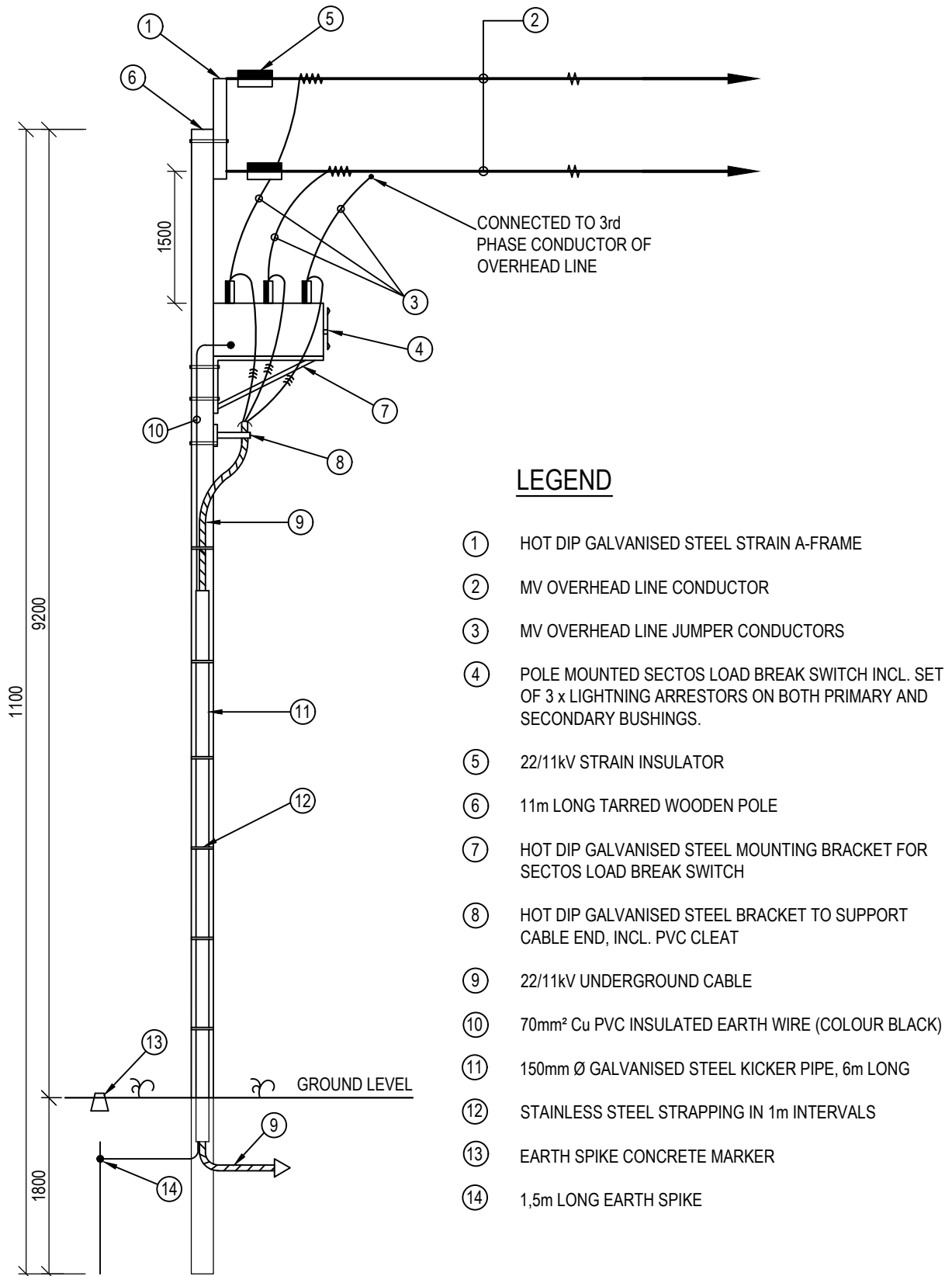
DWG-SIZE

A4

DRAWING NO

10599/E/10

REVISION



CLINKSCALES MAUGHAN-BROWN

CONSULTING MECHANICAL & ELECTRICAL ENGINEERS

PORT ELIZABETH
EAST LONDON
GEORGE
CLINKSCALES MAUGHAN-BROWN (SOUTH) (PTY) LTD (2012/075708/07)

39 Victoria St
George 6529
PO Box 2651
George 6530
Tel: +27 44 874 1511
Fax: +27 44 874 1510
cmb@cmbgeorge.co.za
www.clinkcales.co.za

CAPE TOWN
WINENHURK
C E S A
Quality Engineers South Africa

COPYRIGHT. ALL RIGHTS RESERVED.

NO PART OF THIS DOCUMENT MAY BE REPRODUCED OR TRANSMITTED IN ANY FORM OR BY ANY MEANS, ELECTRICAL OR MECHANICAL, INCLUDING PHOTOCOPYING, RECORDING OR ANY INFORMATION STORAGE AND RETRIEVAL SYSTEM, WITHOUT PERMISSION IN WRITING FROM THE AUTHOR.

CLIENT

KOUGA MUNICIPALITY

PROJECT

**ELECTRIFICATION OF 259 HOUSES AT
KRUISFONTEIN IN HUMANSDORP
(DMRE WORK 2023/24)**

DRAWING TITLE

**TYPICAL MOUNTING DETAIL OF SECTOS
POLE MOUNTED LOAD BREAK SWITCH**

DRAWN

MvM

DESIGNED

GSA

CHECKED

GSA

APPROVED

SCALE

N.T.S.

DATE

15/05/2023

CAD REF No.

10599-E-DET

DWG-SIZE

A4

DRAWING NO

10599/E/12

REVISION

DENSAL PASTE
THREAD OF PIGTAIL BOLT

TOP OF POLE

100

1200

BLACK PVC PIPE

SLOT FOR STRAP

LEGEND

- (A) LV BUNDLED CONDUCTOR (FRENCH SYSTEM)
- (B) NEUTRAL CONDUCTOR OF BUNDLED CONDUCTOR
- (C) LV BUNDLED CONDUCTOR STRAIN CLAMP
- (D) GALVANISED PIGTAIL BOLT M16
- (E) PVC CABLE TIES
- (F) STAINLESS STEEL STRAP
- (G) BLACK PVC PIPE STRAPPED TO POLE
- (H) WEATHERPROOF RUBBER END CAPS
- (J) STAY WIRE
- (K) FUTURE TELKOM O/H PLANT



CLINKSCALES MAUGHAN-BROWN

CONSULTING MECHANICAL & ELECTRICAL ENGINEERS

PORT ELIZABETH
EAST LONDON

GEORGE

CAPE TOWN
WINHURGER

CESA

CLINKSCALES MAUGHAN-BROWN (SOUTH) (PTY) LTD (2012/075708/07)

39 Victoria St
George 6529
PO Box 2651
George 6530
Tel: +27 44 874 1511
Fax: +27 44 874 1510
cmb@cmbgeorge.co.za
www.clinkcales.co.za

COPYRIGHT. ALL RIGHTS RESERVED.

NO PART OF THIS DOCUMENT MAY BE REPRODUCED OR TRANSMITTED IN ANY FORM
OR BY ANY MEANS, ELECTRICAL OR MECHANICAL, INCLUDING PHOTOCOPYING,
RECORDING OR ANY INFORMATION STORAGE AND RETRIEVAL SYSTEM, WITHOUT
PERMISSION IN WRITING FROM THE AUTHOR.

CLIENT

KOUGA MUNICIPALITY

PROJECT

**ELECTRIFICATION OF 259 HOUSES AT
KRUISFONTEIN IN HUMANSDORP
(DMRE WORK 2023/24)**

DRAWING TITLE

LV O/H LINE: TERMINAL POLE

DRAWN

MvM

DESIGNED

GSA

CHECKED

GSA

APPROVED

SCALE

N.T.S.

DATE

15/05/2023

CAD REF No.

10599-E-DET

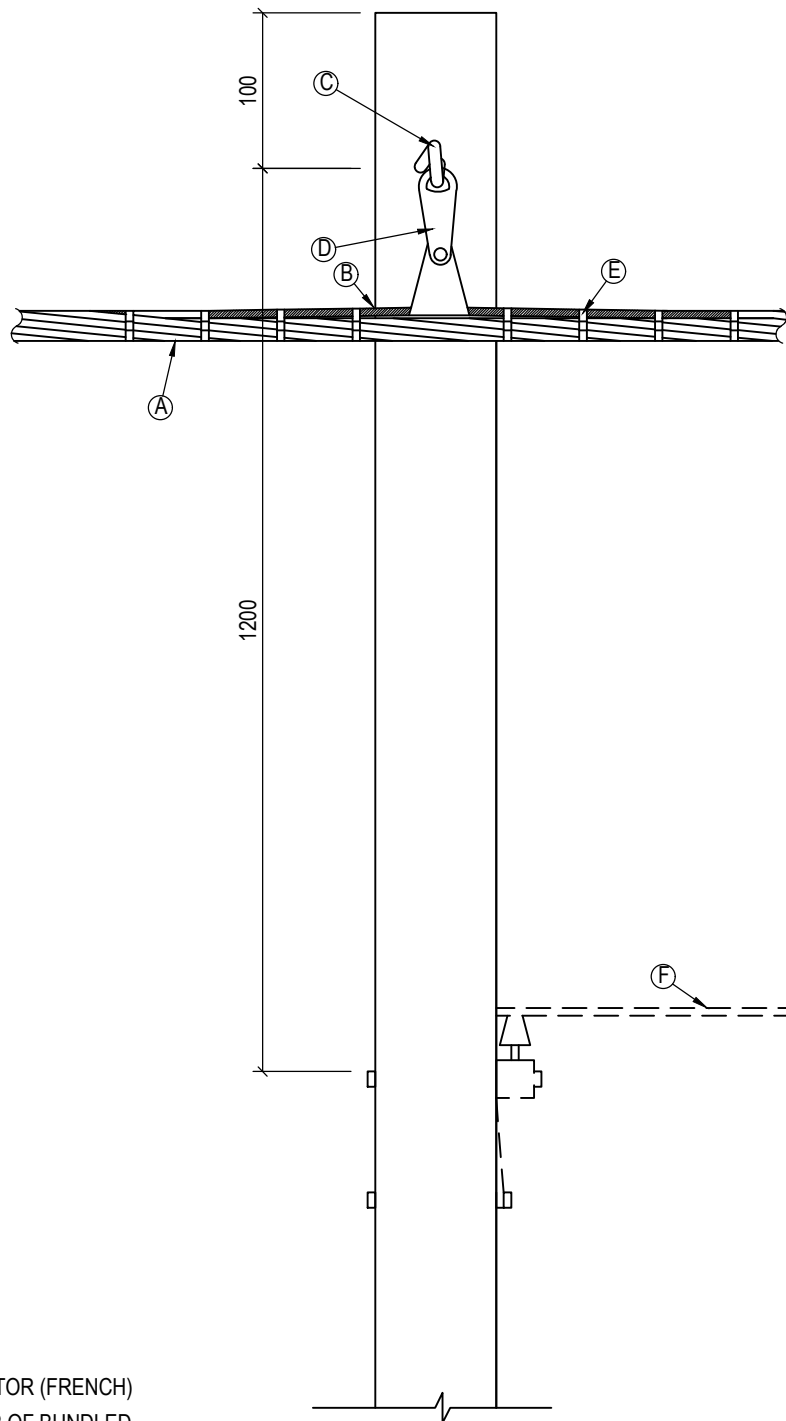
DWG-SIZE

A4

DRAWING NO

10599/E/13

REVISION



LEGEND

- (A) LV BUNDLED CONDUCTOR (FRENCH)
- (B) NEUTRAL CONDUCTOR OF BUNDLED CONDUCTOR
- (C) PIGTAIL BOLT
- (D) BUNDLED CONDUCTOR INTERMEDIATE SUSPENSION CLAMP
- (E) PVC CABLE TIES
- (F) POSSIBLE FUTURE TELKOM O/H PLANT



CLINKSCALES MAUGHAN-BROWN

CONSULTING MECHANICAL & ELECTRICAL ENGINEERS

PORT ELIZABETH
EAST LONDON
GEORGE
CLINKSCALES MAUGHAN-BROWN (SOUTH) (PTY) LTD (2012/075708/07)

39 Victoria St
George 6529
PO Box 2651
George 6530
Tel: +27 44 874 1511
Fax: +27 44 874 1510
cmb@cmbgeorge.co.za
www.clinkcales.co.za



COPYRIGHT. ALL RIGHTS RESERVED.

NO PART OF THIS DOCUMENT MAY BE REPRODUCED OR TRANSMITTED IN ANY FORM OR BY ANY MEANS, ELECTRICAL OR MECHANICAL, INCLUDING PHOTOCOPYING, RECORDING OR ANY INFORMATION STORAGE AND RETRIEVAL SYSTEM, WITHOUT PERMISSION IN WRITING FROM THE AUTHOR.

CLIENT

KOUGA MUNICIPALITY

PROJECT

**ELECTRIFICATION OF 259 HOUSES AT
KRUISFONTEIN IN HUMANSDORP
(DMRE WORK 2023/24)**

DRAWING TITLE

LV O/H LINE: INTERMEDIATE POLE

DRAWN

MvM

DESIGNED

GSA

CHECKED

GSA

APPROVED

SCALE

N.T.S.

DATE

15/05/2023

CAD REF No.

10599-E-DET

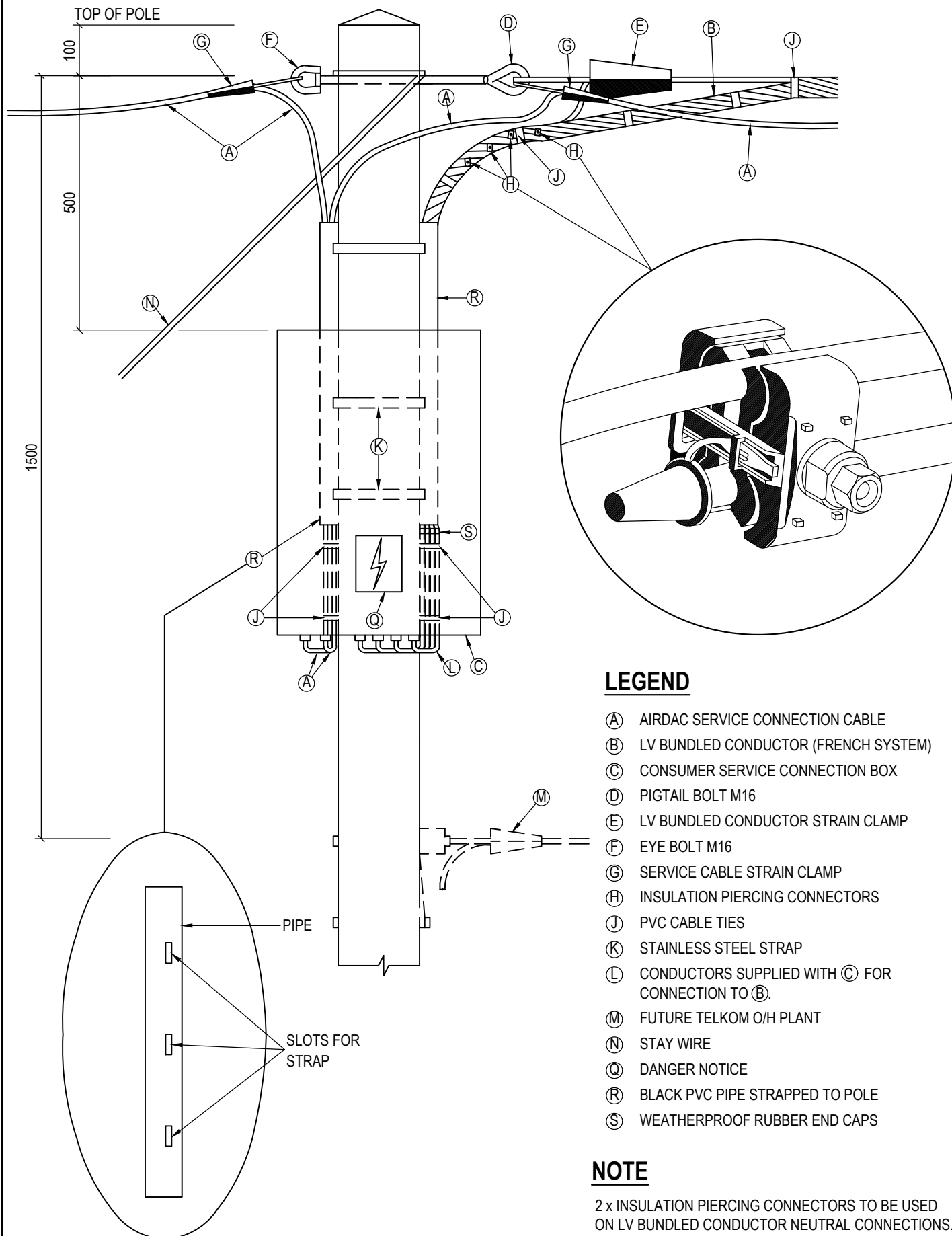
DWG-SIZE

A4

DRAWING NO

10599/E/14

REVISION



CLINKSCALES MAUGHAN-BROWN

CONSULTING MECHANICAL & ELECTRICAL ENGINEERS

PORT ELIZABETH
EAST LONDON

GEORGE

CAPE TOWN
WINHURGER

CESA

CLINKSCALES MAUGHAN-BROWN (SOUTH) (PTY) LTD (2012/075708/07)

39 Victoria St
George 6529
PO Box 2851
George 6530
Tel: +27 44 874 1511
Fax: +27 44 874 1510
cmb@cmbgeorge.co.za
www.clinkcales.co.za

COPYRIGHT. ALL RIGHTS RESERVED.

NO PART OF THIS DOCUMENT MAY BE REPRODUCED OR TRANSMITTED IN ANY FORM OR BY ANY MEANS, ELECTRICAL OR MECHANICAL, INCLUDING PHOTOCOPYING, RECORDING OR ANY INFORMATION STORAGE AND RETRIEVAL SYSTEM, WITHOUT PERMISSION IN WRITING FROM THE AUTHOR.

CLIENT

KOUGA MUNICIPALITY

PROJECT

**ELECTRIFICATION OF 259 HOUSES AT
KRUISFONTEIN IN HUMANSDORP
(DMRE WORK 2023/24)**

DRAWING TITLE

**LV O/H LINE: STRAIN POLE WITH
CONSUMER SERVICE CONNECTION BOX FOR
O/H SERVICE CONNECTIONS**

DRAWN

MvM

DESIGNED

GSA

CHECKED

GSA

APPROVED

SCALE

N.T.S.

DATE

15/05/2023

CAD REF No.

10599-E-DET

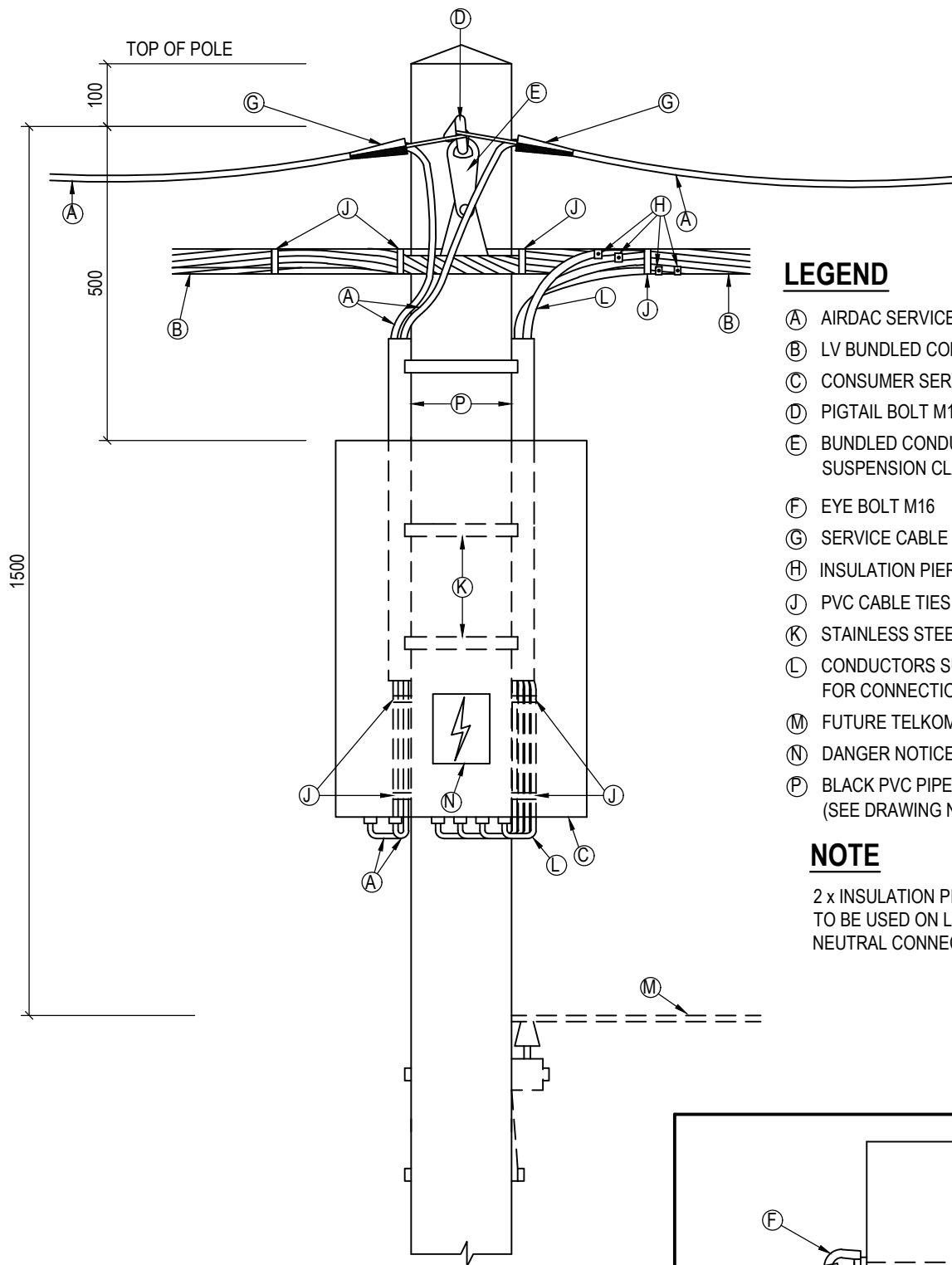
DWG-SIZE

A4

DRAWING NO

10599/E/15

REVISION

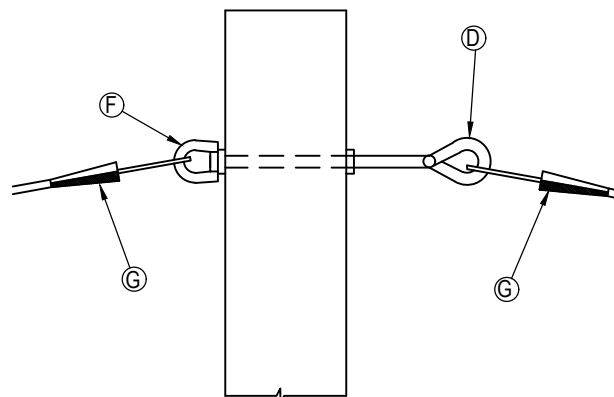


LEGEND

- (A) AIRDAC SERVICE CONNECTION CABLE
- (B) LV BUNDLED CONDUCTOR (FRENCH)
- (C) CONSUMER SERVICE CONNECTION BOX
- (D) PIGTAIL BOLT M16
- (E) BUNDLED CONDUCTOR INTERMEDIATE SUSPENSION CLAMP
- (F) EYE BOLT M16
- (G) SERVICE CABLE STRAIN CLAMP
- (H) INSULATION PIERCING CONNECTORS
- (J) PVC CABLE TIES
- (K) STAINLESS STEEL STRAP
- (L) CONDUCTORS SUPPLIED WITH (C) FOR CONNECTION TO (B).
- (M) FUTURE TELKOM O/H PLANT
- (N) DANGER NOTICE
- (P) BLACK PVC PIPE STRAPPED TO POLE (SEE DRAWING NO. 10599/E/15 FOR DETAIL)

NOTE

2 x INSULATION PIERCING CONNECTORS TO BE USED ON LV BUNDLED CONDUCTOR NEUTRAL CONNECTIONS.



SIDE VIEW SHOWING SERVICE CABLE STRAIN POINTS.



CLINKSCALES MAUGHAN-BROWN

CONSULTING MECHANICAL & ELECTRICAL ENGINEERS

PORT ELIZABETH

EAST LONDON

GEORGE

CAPE TOWN

WINHURST

CLINKSCALES MAUGHAN-BROWN (SOUTH) (PTY) LTD (2012/075708/07)

www.clinkcales.co.za

39 Victoria St
George 6529
PO Box 2551
George 6530
Tel: +27 44 874 1511
Fax: +27 44 874 1510
cmb@clinkcales.co.za
www.clinkcales.co.za

Quality Systems South Africa

COPYRIGHT. ALL RIGHTS RESERVED.

NO PART OF THIS DOCUMENT MAY BE REPRODUCED OR TRANSMITTED IN ANY FORM OR BY ANY MEANS, ELECTRICAL OR MECHANICAL, INCLUDING PHOTOCOPYING, RECORDING OR ANY INFORMATION STORAGE AND RETRIEVAL SYSTEM, WITHOUT PERMISSION IN WRITING FROM THE AUTHOR.

CLIENT

KOUGA MUNICIPALITY

PROJECT

**ELECTRIFICATION OF 259 HOUSES AT
KRUISFONTEIN IN HUMANSDORP
(DMRE WORK 2023/24)**

DRAWING TITLE

**LV O/H LINE: INTERMEDIATE POLE WITH
CONSUMER SERVICE CONNECTION BOX FOR
O/H SERVICE CONNECTIONS**

DRAWN

MvM

DESIGNED

GSA

CHECKED

GSA

APPROVED

SCALE

N.T.S.

DATE

15/05/2023

CAD REF No.

10599-E-DET

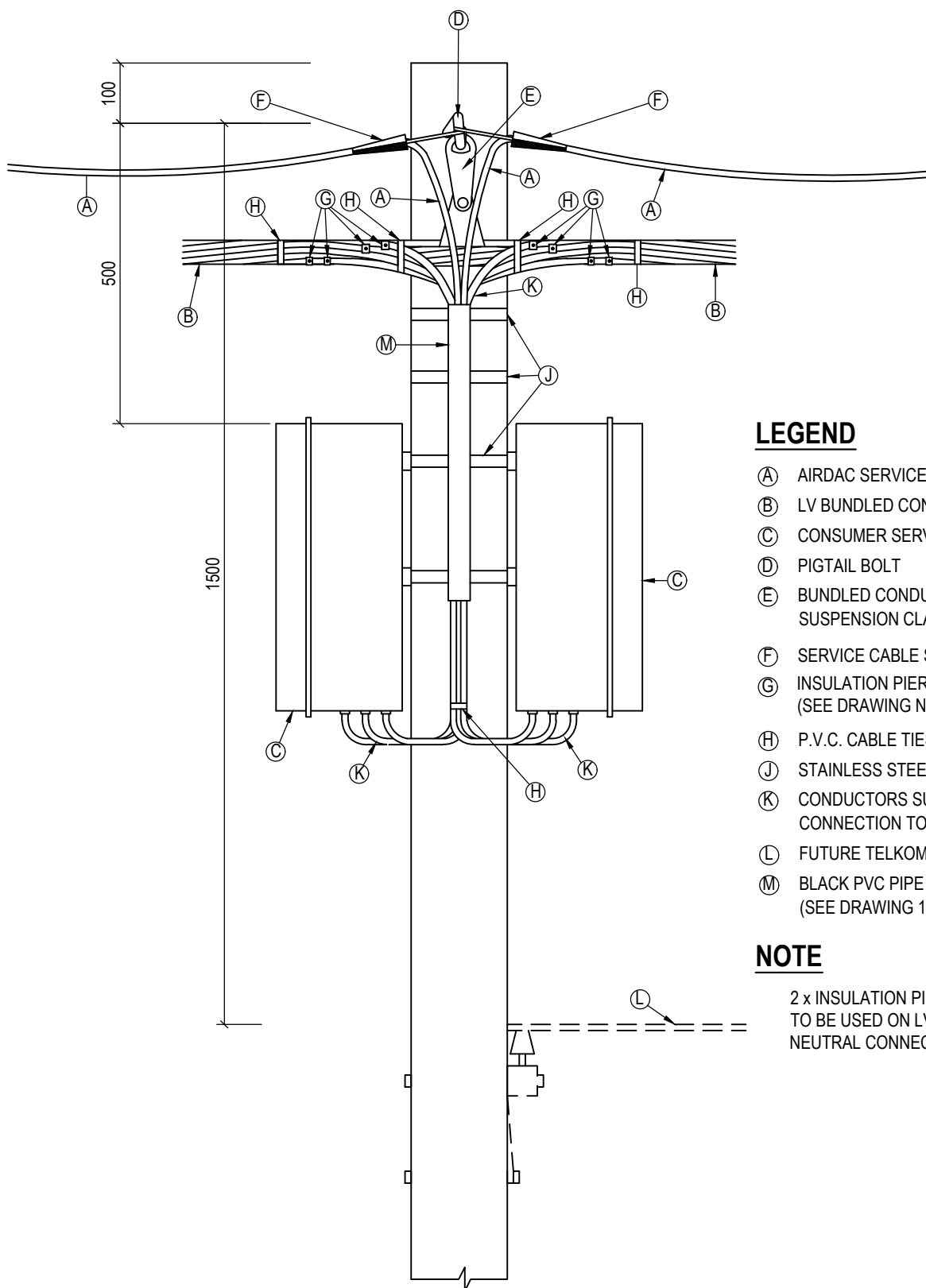
DWG-SIZE

A4

DRAWING NO

10599/E/16

REVISION



LEGEND

- Ⓐ AIRDAC SERVICE CONNECTION CABLE
- Ⓑ LV BUNDLED CONDUCTOR (FRENCH)
- Ⓒ CONSUMER SERVICE CONNECTION BOX
- Ⓓ PIGTAIL BOLT
- Ⓔ BUNDLED CONDUCTOR INTERMEDIATE SUSPENSION CLAMP
- Ⓕ SERVICE CABLE STRAIN CLAMP
- Ⓖ INSULATION PIERCING CONNECTORS (SEE DRAWING NO. 10599/E/15)
- Ⓗ P.V.C. CABLE TIES
- Ⓙ STAINLESS STEEL STRAP
- Ⓚ CONDUCTORS SUPPLIED WITH Ⓒ FOR CONNECTION TO Ⓑ
- Ⓛ FUTURE TELKOM O/H PLANT
- Ⓜ BLACK PVC PIPE STRAPPED TO POLE (SEE DRAWING 10599/E/15 FOR DETAIL)

NOTE

2 x INSULATION PIERCING CONNECTORS TO BE USED ON LV BUNDLED CONDUCTOR NEUTRAL CONNECTIONS.



CLINKSCALES MAUGHAN-BROWN
CONSULTING MECHANICAL & ELECTRICAL ENGINEERS

PORT ELIZABETH
EAST LONDON
GEORGE
CAPE TOWN
WINHOUER

39 Victoria St
George 6529
PO Box 2651
George 6530
Tel: +27 44 874 1511
Fax: +27 44 874 1510
cmb@cmbmaughanbrown.co.za
www.clinkscaldes.co.za



COPYRIGHT. ALL RIGHTS RESERVED.

NO PART OF THIS DOCUMENT MAY BE REPRODUCED OR TRANSMITTED IN ANY FORM OR BY ANY MEANS, ELECTRICAL OR MECHANICAL, INCLUDING PHOTOCOPYING, RECORDING OR ANY INFORMATION STORAGE AND RETRIEVAL SYSTEM, WITHOUT PERMISSION IN WRITING FROM THE AUTHOR.

CLIENT

KOUGA MUNICIPALITY

PROJECT

**ELECTRIFICATION OF 259 HOUSES AT
KRUISFONTEIN IN HUMANSDORP
(DMRE WORK 2023/24)**

DRAWING TITLE

**LV O/H LINE: INTERMEDIATE POLE WITH TWO
CONSUMER SERVICE CONNECTION BOXES (6
< CONSUMER)**

DRAWN

MvM

DESIGNED

GSA

CHECKED

GSA

APPROVED

SCALE

N.T.S.

DATE

15/05/2023

CAD REF No.

10599-E-DET

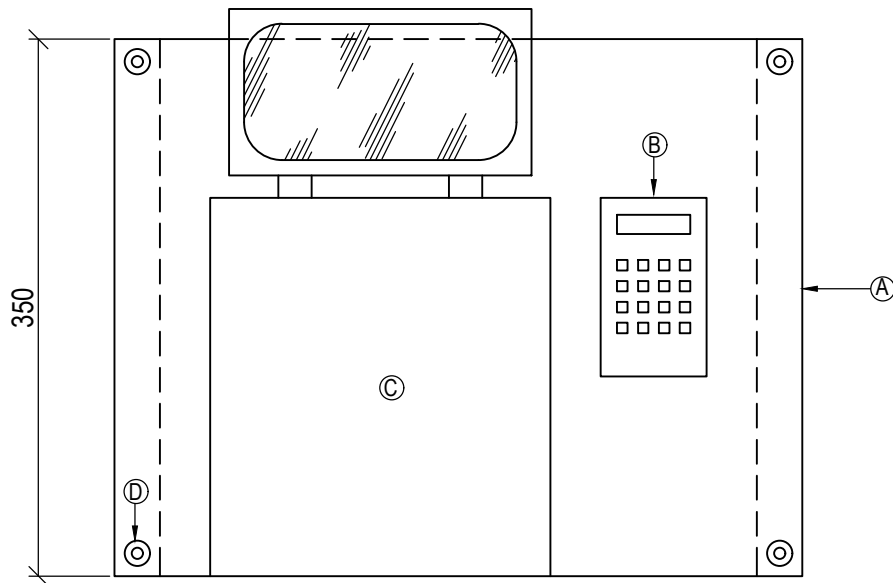
DWG-SIZE

A4

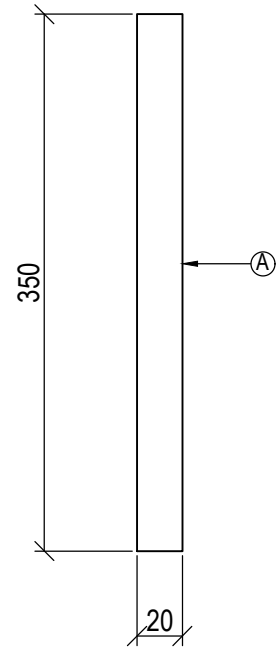
DRAWING NO

10599/E/17

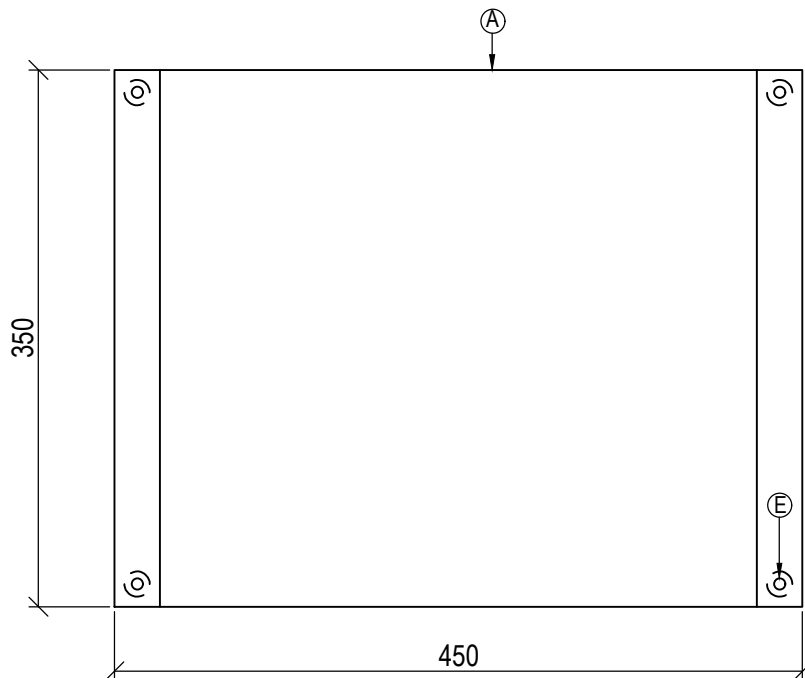
REVISION



**FRONT VIEW ELEVATION WITH kWh
METER KEYPAD & READY BOARD**



**SIDE VIEW ELEVATION,
EXCLUDING kWh METER KEYPAD
AND READY BOARD**



**REAR VIEW ELEVATION, EXCLUDING kWh
METER KEYPAD AND READY BOARD**

LEGEND

- (A) 450 x 350 x 20mm LAMINATED WOODEN MOUNTING BOARD FIXED TO WALL WITH 4 GALVANISED STEEL BOLTS / SELF-TAPPING SCREWS
- (B) kWh METER KEYPAD (USER INTERFACE UNIT)
- (C) READY BOARD
- (D) 16mm Ø HOLE FOR SCREW DRIVER ENTRY TO SECURE FIXING SCREWS
- (E) 6mm Ø HOLE FOR FIXING SCREWS



CLINKSCALES MAUGHAN-BROWN

CONSULTING MECHANICAL & ELECTRICAL ENGINEERS

PORT ELIZABETH
EAST LONDON

GEORGE

CAPE TOWN
WINHURST

CLINKSCALES MAUGHAN-BROWN (SOUTH) (PTY) LTD (2012/075708/07)

39 Victoria St
George 6529
PO Box 2651
George 6530
Tel: +27 44 874 1511
Fax: +27 44 874 1510
cmb@cmbgeorge.co.za
www.clinkcales.co.za

C E S A
Quality Engineers South Africa

COPYRIGHT. ALL RIGHTS RESERVED.

NO PART OF THIS DOCUMENT MAY BE REPRODUCED OR TRANSMITTED IN ANY FORM OR BY ANY MEANS, ELECTRICAL OR MECHANICAL, INCLUDING PHOTOCOPYING, RECORDING OR ANY INFORMATION STORAGE AND RETRIEVAL SYSTEM, WITHOUT PERMISSION IN WRITING FROM THE AUTHOR.

CLIENT

KOUGA MUNICIPALITY

PROJECT

**ELECTRIFICATION OF 259 HOUSES AT
KRUISFONTEIN IN HUMANSDORP
(DMRE WORK 2023/24)**

DRAWING TITLE

**MOUNTING BOARD DETAIL FOR SPLIT
PREPAID kWh METER KEYPAD (UIU) AND
READY BOARD**

DRAWN

MvM

DESIGNED

GSA

CHECKED

GSA

APPROVED

SCALE

N.T.S.

DATE

15/05/2023

CAD REF No.

10599-E-DET

DWG-SIZE

A4

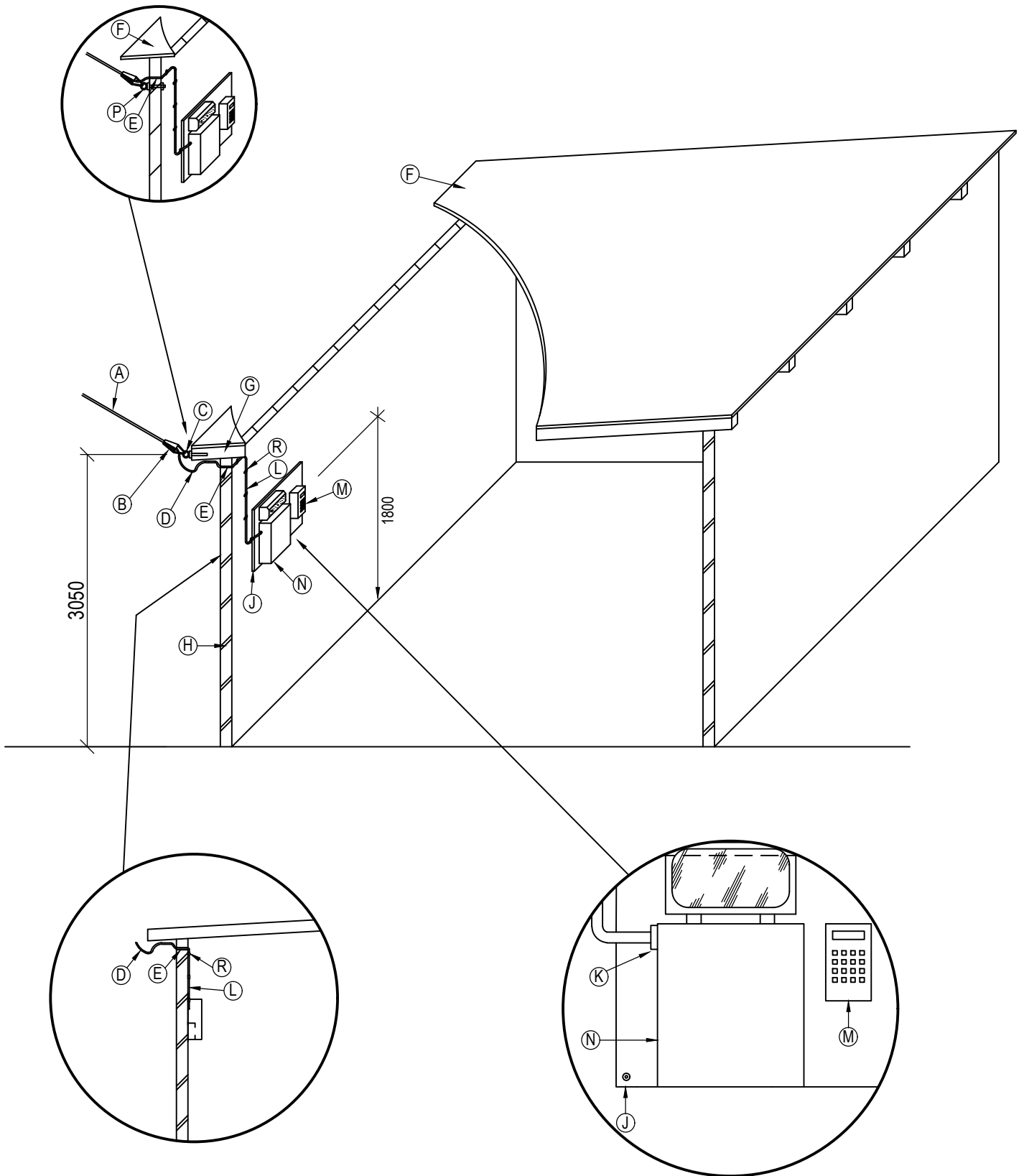
DRAWING NO

10599/E/18

REVISION

NOTE: REFER TO DRAWING NO'S 10599/E/21 & 22 FOR LEGEND AND NOTES

ALTERNATIVE "A"



CLINKSCALES MAUGHAN-BROWN

CONSULTING MECHANICAL & ELECTRICAL ENGINEERS

PORT ELIZABETH
EAST LONDON

GEORGE

CAPE TOWN
WINDELSKOP

CESA
Quality Engineers South Africa

39 Victoria St
George 6529
PO Box 2851
George 6530
Tel: +27 44 874 1511
Fax: +27 44 874 1510
cmb@cmbgeorge.co.za
www.clinkcales.co.za

COPYRIGHT. ALL RIGHTS RESERVED.

NO PART OF THIS DOCUMENT MAY BE REPRODUCED OR TRANSMITTED IN ANY FORM OR BY ANY MEANS, ELECTRICAL OR MECHANICAL, INCLUDING PHOTOCOPYING, RECORDING OR ANY INFORMATION STORAGE AND RETRIEVAL SYSTEM, WITHOUT PERMISSION IN WRITING FROM THE AUTHOR.

CLIENT

KOUGA MUNICIPALITY

PROJECT

**ELECTRIFICATION OF 259 HOUSES AT
KRUISFONTEIN IN HUMANSDORP
(DMRE WORK 2023/24)**

DRAWING TITLE

**O/H SERVICE CONNECTION: TYPICAL
INSTALLATION IN HOUSE: PROPOSED
METHOD AND ALTERNATIVE "A"**

DRAWN

MvM

DESIGNED

GSA

CHECKED

GSA

APPROVED

SCALE

N.T.S.

DATE

15/05/2023

CAD REF No.

10599-E-DET

DWG-SIZE

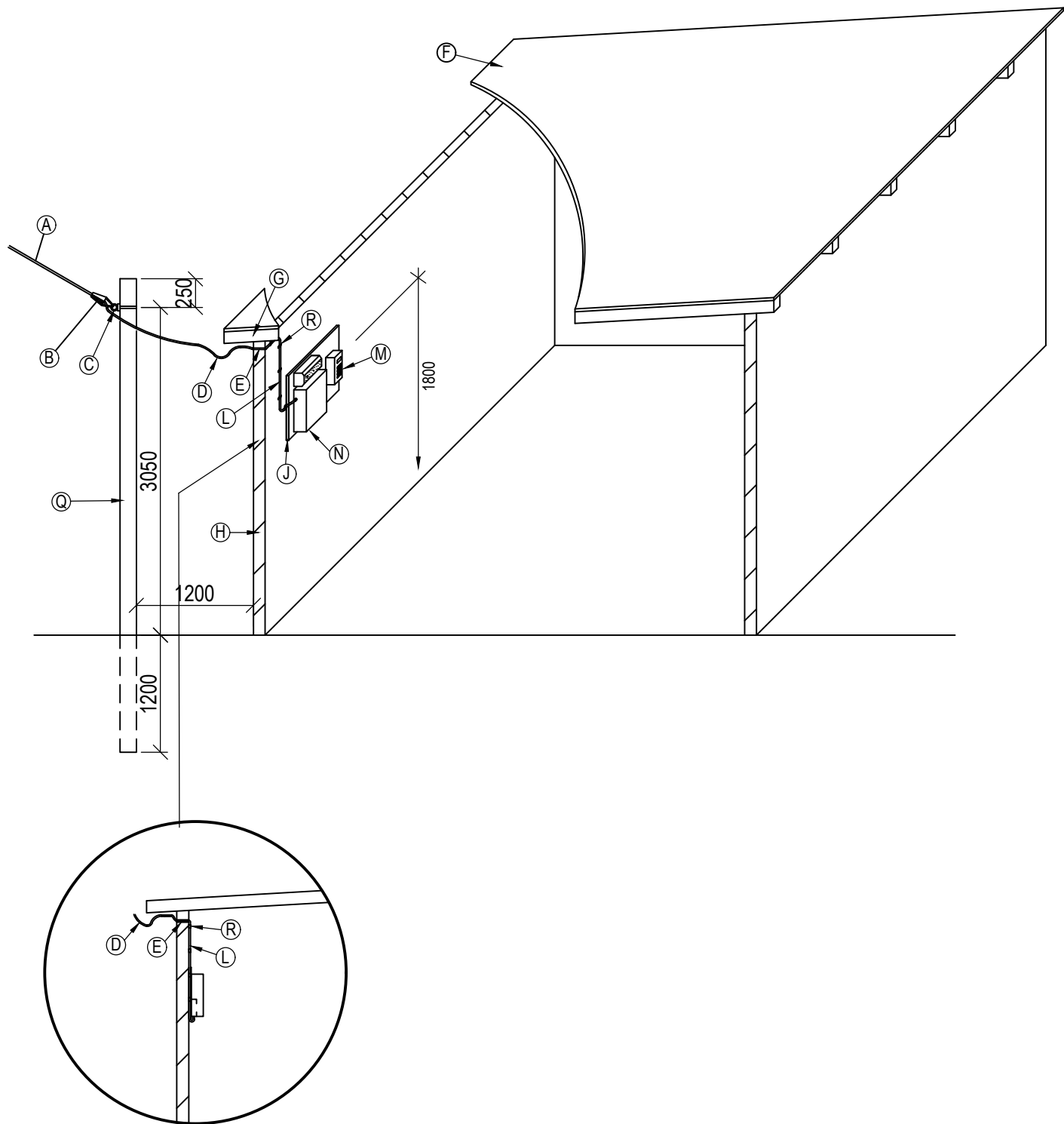
A4

DRAWING NO

10599/E/19

REVISION

NOTE: REFER TO DRAWING NO'S 10599/E/21 & 22 FOR LEGEND AND NOTES



LEGEND

- Ⓐ AIRDAC SERVICE CONNECTION CABLE
- Ⓑ STRAIN CLAMP
- Ⓒ PIGTAIL SCREW
- Ⓓ DRIP LOOP IN SERVICE CABLE
- Ⓔ HOLE IN WALL WITH 25mm Ø PVC CONDUIT FOR SERVICE CABLE ENTRY, SEALED WITH SILICON SEALER
- Ⓕ WOOD, ASBESTOS OR CORRUGATED IRON ROOF
- Ⓖ WOODEN BEAM
- Ⓗ WOOD, CORRUGATED IRON, CLAY OR BRICK WALLS
- Ⓙ 450 x 350 x 20mm LAMINATED WOODEN MOUNTING BOARD FIXED TO WALL WITH 4 GALVANISED STEEL BOLTS/SELF-TAPPING SCREWS (SEE DRAWING NO. 10599/E/18 FOR DETAIL).
- Ⓚ PVC COMPRESSION GLAND
- Ⓛ 10mm² AIRDAC, FIXED TO WALL
- Ⓜ SPLIT PREPAID kWh METER KEYPAD (UIU)
- Ⓝ READY BOARD WITH BULKHEAD LIGHT FITTING
- Ⓟ M10 GALVANISED STEEL EYE BOLT
- Ⓠ 4,5m WOODEN POLE
- Ⓡ GALVANISED WALL SADDLES FIXING AIRDAC CABLE TO WALL, SPACED MIN. 400mm APART.



CLINKSCALES MAUGHAN-BROWN
CONSULTING MECHANICAL & ELECTRICAL ENGINEERS

PORT ELIZABETH
EAST LONDON
GEORGE
CAPE TOWN
WINHOUER

39 Victoria St
George 6529
PO Box 2651
George 6530
Tel: +27 44 874 1511
Fax: +27 44 874 1510
cmb@cmbgeorge.co.za
www.clinkcales.co.za



COPYRIGHT. ALL RIGHTS RESERVED.
NO PART OF THIS DOCUMENT MAY BE REPRODUCED OR TRANSMITTED IN ANY FORM
OR BY ANY MEANS, ELECTRICAL OR MECHANICAL, INCLUDING PHOTOCOPYING,
RECORDING OR ANY INFORMATION STORAGE AND RETRIEVAL SYSTEM, WITHOUT
PERMISSION IN WRITING FROM THE AUTHOR.

CLIENT

KOUGA MUNICIPALITY

PROJECT
**ELECTRIFICATION OF 259 HOUSES AT
KRUISFONTEIN IN HUMANSDORP
(DMRE WORK 2023/24)**

DRAWING TITLE

**LEGEND FOR DRAWING NO'S.
10599/E/19 & 20**

DRAWN
MvM

DESIGNED
GSA

CHECKED
GSA

APPROVED

SCALE
N.T.S.

DATE
15/05/2023

CAD REF No.
10599-E-DET

DWG-SIZE
A4

DRAWING NO

10599/E/21

REVISION

NOTES

- 1) IT IS THE CONTRACTOR'S RESPONSIBILITY TO EVALUATE EACH ERF'S SITE CONDITIONS IN ORDER TO DETERMINE THE BEST METHOD OF CONNECTION TO THE HOUSE CONCERNED.
- 2) WHERE THE ROOF IS SUPPORTED BY WOODEN BEAMS OR IF THESE BEAMS ARE FOUND TO BE SUITABLE FOR THE ATTACHMENT OF THE SERVICE CABLE, THEN ALTERNATIVE "A" IS TO BE USED.
- 3) WHERE THE WALLS AND STRUCTURE OF THE HOUSE ARE FOUND TO BE UNSUITABLE FOR THE ATTACHMENT OF THE SERVICE CABLE OR IF NO SUITABLE POINT OF ATTACHMENT CAN BE FOUND OR IF THE ONLY ACCEPTABLE POINT OF ATTACHMENT TO THE HOUSE IS LESS THAN THE MINIMUM OF 2800 mm FROM GROUND LEVEL, THEN ALTERNATIVE "B" IS TO BE USED.
- 4) IF THE SOIL AROUND THE 4,5m POLE IS NOT SUITABLE FOR COMPACTION THEN A SAND CEMENT MIXTURE, OF THE RATIO 10:1, IS TO BE USED AS BACKFILL.
- 5) MOUNT THE SPLIT PREPAID kWh METER KEYPAD (UIU) AND READY BOARD ON THE WOODEN MOUNTING BOARD USING GALVANISED SELF TAPPING SCREWS.
- 6) THE MOUNTING BOARD WITH THE EQUIPMENT MUST NOT BE MOUNTED WITHIN A RADIUS OF 1000mm FROM ANY WATER TAP.
- 7) THE MOUNTING BOARD SHALL BE MOUNTED SO THAT THE TOP OF THE BOARD IS 1800mm ABOVE THE FLOOR.
- 8) SERVICE CABLE ENTRY INTO HOUSE TO BE SEALED AT BOTH ENDS WITH SILICON SEALER AFTER INSTALLATION OF THE CABLE. WHERE POSSIBLE, THE ENTRY MUST BE MADE DIRECTLY ABOVE THE MOUNTING BOARD.
- 9) THE ERF DESIGNATION SHALL BE NEATLY STENCILED WITH A PERMANENT MARKER ON THE MOUNTING BOARD, 20mm HIGH LETTERING.



CLINKSCALES MAUGHAN-BROWN

CONSULTING MECHANICAL & ELECTRICAL ENGINEERS

PORT ELIZABETH
EAST LONDON
GEORGE
CAPE TOWN
WINHURGER

39 Victoria St
George 6529
PO Box 2651
George 6530
Tel: +27 44 874 1511
Fax: +27 44 874 1510
cmb@cmbgeorge.co.za
www.clinkcales.co.za



COPYRIGHT. ALL RIGHTS RESERVED.

NO PART OF THIS DOCUMENT MAY BE REPRODUCED OR TRANSMITTED IN ANY FORM OR BY ANY MEANS, ELECTRICAL OR MECHANICAL, INCLUDING PHOTOCOPYING, RECORDING OR ANY INFORMATION STORAGE AND RETRIEVAL SYSTEM, WITHOUT PERMISSION IN WRITING FROM THE AUTHOR.

CLIENT

KOUGA MUNICIPALITY

PROJECT

**ELECTRIFICATION OF 259 HOUSES AT
KRUISFONTEIN IN HUMANSDORP
(DMRE WORK 2023/24)**

DRAWING TITLE

**NOTES FOR DRAWING NO'S
10599/E/19 & 20**

DRAWN

MvM

DESIGNED

GSA

CHECKED

GSA

APPROVED

SCALE

N.T.S.

DATE

15/05/2023

CAD REF No.

10599-E-DET

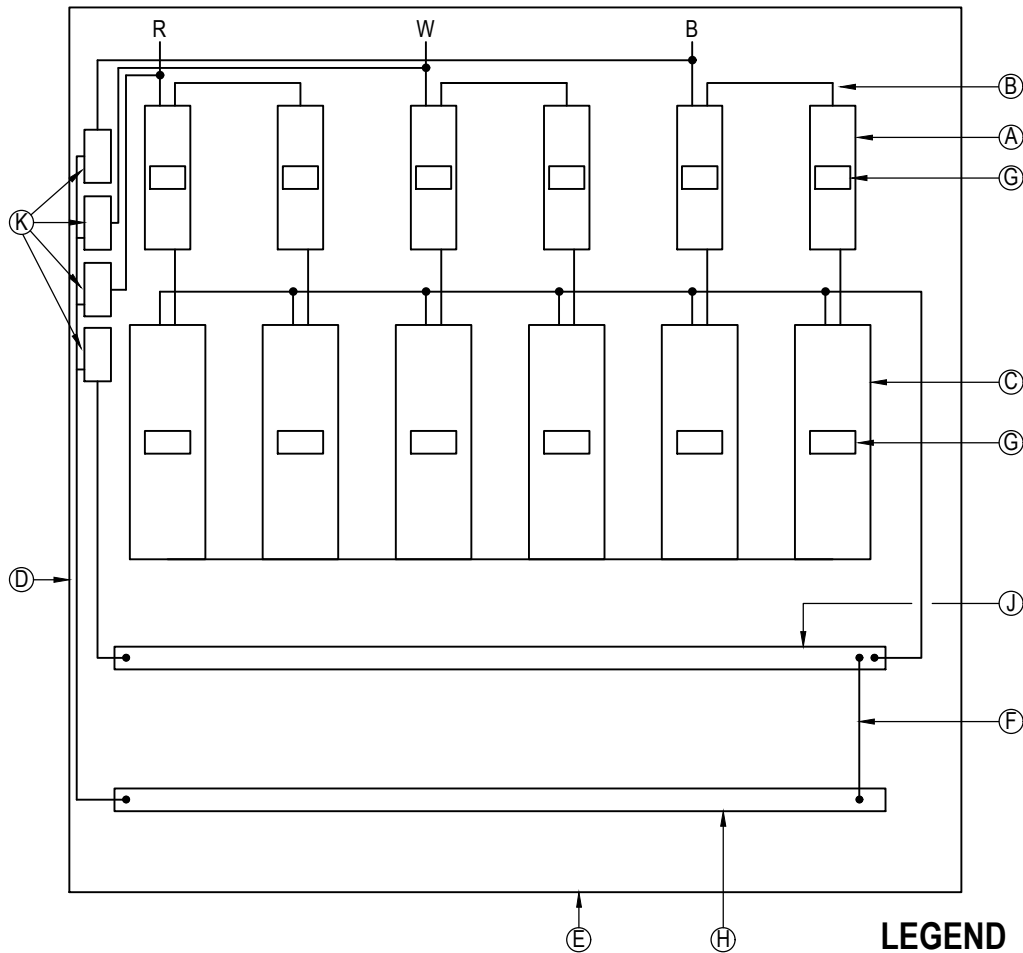
DWG-SIZE

A4

DRAWING NO

10599/E/22

REVISION



INTERNAL LAYOUT

LEGEND

- (A) 63A SP MCB'S, CBI TYPE QF, ORANGE HANDLE (CURVE 1) FIXED TO CLIP IN FRAME COMPLETE WITH SHROUD.
- (B) 16mm² Cu INSULATED CONDUCTOR CONNECTIONS TO PHASES.
- (C) SPLIT PREPAID kWh METER MEASUREMENT AND CONTROL UNITS (MCU'S) FIXED TO DIN RAIL
- (D) POLYETHYLENE POLE MOUNTED CONSUMER SERVICE CONNECTION BOX (CSCB) FITTED WITH STAINLESS STEEL MOUNTING BRACKETS SUITABLE FOR FIXING BOX TO POLE WITH 19mm STAINLESS STEEL STRAPS. CSCB TO BE PROVIDED WITH A DOOR THAT IS OPENED UPWARDS AND A FACILITY TO KEEP DOOR IN OPEN POSITION.
- (E) PRE-DRILLED FOR LV CONDUCTOR
- (F) BRIDGE BETWEEN NEUTRAL AND EARTH BAR USING 35mm² Cu BLACK PVC INSULATED CONDUCTOR
- (G) LABEL TO INDICATE ERF NO. SERVED BY MCB / METER
- (H) EARTH BAR
- (J) NEUTRAL BAR
- (K) 4 x SURGE ARRESTORS CBI TYPE QFLN-4(13)

NOTES

- BOX TO BE PROVIDED COMPLETE WITH MIN. 2.5m LONG 16mm² Cu BLACK, UV STABLE, CONDUCTORS FOR CONNECTIONS TO OVERHEAD LINE. RED, BLUE & WHITE COLOUR CODED HEAT SHRINK TAGS TO BE INSTALLED ON ALL CONDUCTOR TAIL ENDS.
- *TO BE SUPPLIED WITH CONSUMER SERVICE CONNECTION BOX.
- ALL BOLTS, NUTS, POP RIVETS, HINGES, HASP AND STAPLE TO BE STAINLESS STEEL.
- CONTRACTOR TO ENSURE THAT THE CSCB IS OF SUFFICIENT SIZE TO ACCOMMODATE ALL THE EQUIPMENT SHOWN.



CLINKSCALES MAUGHAN-BROWN

CONSULTING MECHANICAL & ELECTRICAL ENGINEERS

PORT ELIZABETH
EAST LONDON

GEORGE

CAPE TOWN
WINHURGER

CLINKSCALES MAUGHAN-BROWN (SOUTH) (PTY) LTD (2012/075708/07)

39 Victoria St
George 6529
PO Box 2851
George 6530
Tel: +27 44 874 1511
Fax: +27 44 874 1510
cmb@clinkscale.co.za
www.clinkscale.co.za

C E S A

Quality Engineers South Africa

COPYRIGHT. ALL RIGHTS RESERVED.

NO PART OF THIS DOCUMENT MAY BE REPRODUCED OR TRANSMITTED IN ANY FORM OR BY ANY MEANS, ELECTRICAL OR MECHANICAL, INCLUDING PHOTOCOPYING, RECORDING OR ANY INFORMATION STORAGE AND RETRIEVAL SYSTEM, WITHOUT PERMISSION IN WRITING FROM THE AUTHOR.

CLIENT

KOUGA MUNICIPALITY

PROJECT

**ELECTRIFICATION OF 259 HOUSES AT
KRUISFONTEIN IN HUMANSDORP
(DMRE WORK 2023/24)**

DRAWING TITLE

**POLE MOUNTED CONSUMER SERVICE
CONNECTION BOX (CSCB) FOR MAX 6 x SPLIT
PREPAID kWh METERS**

DRAWN

MvM

DESIGNED

GSA

CHECKED

GSA

APPROVED

SCALE

N.T.S.

DATE

15/05/2023

CAD REF No.

10599-E-DET

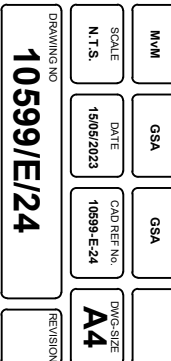
DWG-SIZE


A4

DRAWING NO


10599/E/23

REVISION





ELECTRIFICATION OF 259 HOUSES AT KRUISFONTEIN IN HUMANSDORP




CONSULTANTS

CLINKSCALES MAUGHAN-BROWN

CONTRACTORS

CONTRACTOR'S NAME

TELEPHONE NUMBER



FUNDER

**DEPARTMENT MINERAL
RESOURCES & ENERGY**

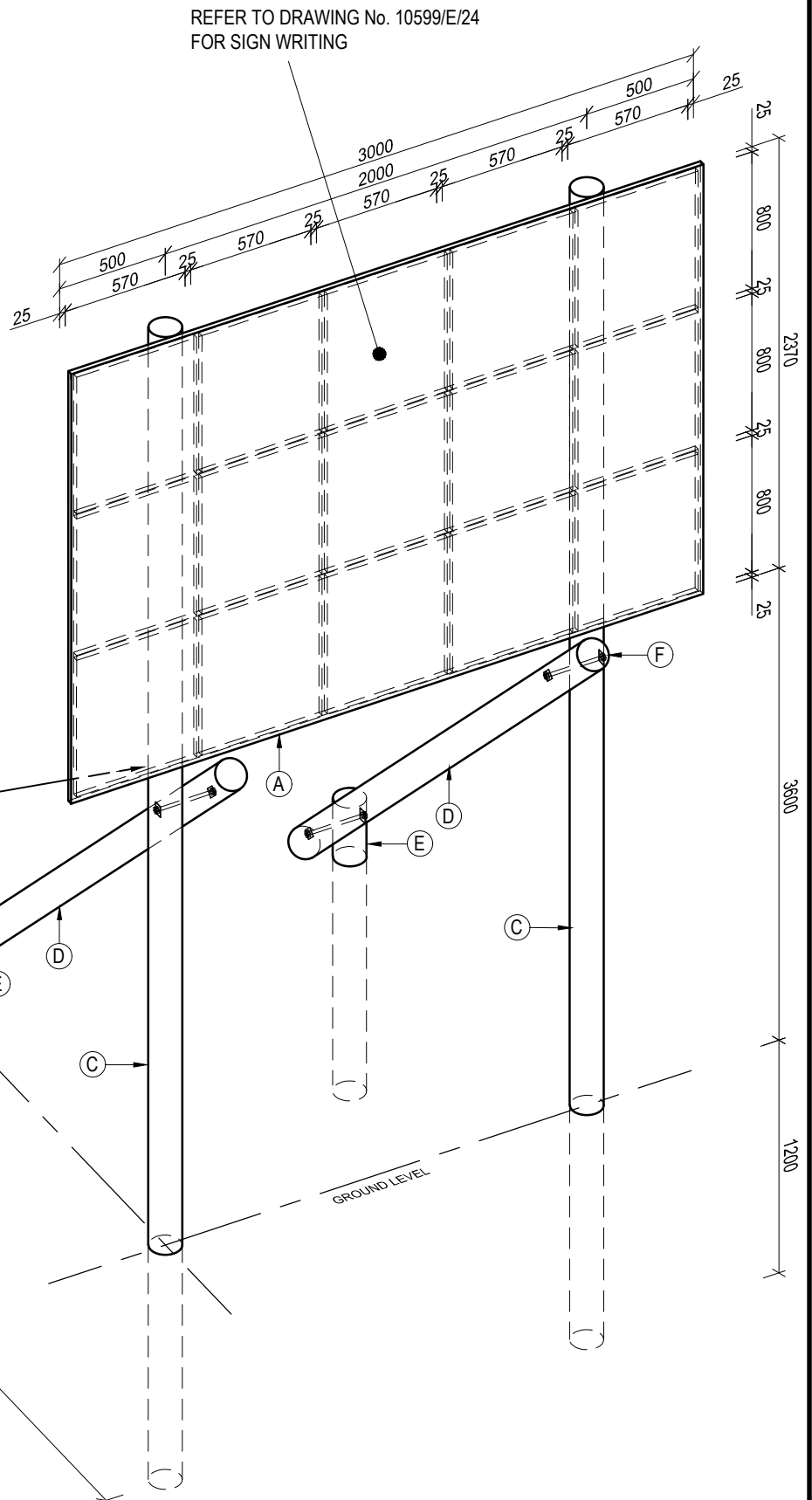
TEL: 043 703 6000

AMOUNT

**R4,7 mil
(2023/24)**

LEGEND

- (A) 3000mm x 2370mm, 1mm THICK SHEET METAL BOARD SECURED TO 25mm x 25mm GALVANISED STEEL SQUARE TUBING FRAME USING 4,8mm Ø x 10mm LONG ALUMINIUM REVITS.
- (B) FRAME FIXED AGAINST TARRED WOODEN POLES USING 76,2mm WIDE GALVANISED STEEL CLAMPS SUITABLE TO FIT IN UNISTRUT IN ITEM G ON THIS DRAWING.
- (C) 7300mm LONG TARRED WOODEN POLE MIN. 140mm DIAMETER.
- (D) 3500mm LONG TARRED WOODEN PROP POLE MIN. 140mm DIAMETER.
- (E) 1500mm LONG TARRED WOODEN PROP POLE MIN. 140mm DIAMETER.
- (F) 300mm LONG M20 GALVANISED STEEL BOLT WITH TWO NUTS AND WASHERS.
- (G) GALVANISED STEEL 76,2mm x 25mm UNISTRUT WELDED IN BETWEEN SQUARE TUBING.



NOTE:

SUPPORT STRUCTURE TO BE INSTALLED SO THAT PROJECT NOTICE BOARD IS FACING ONCOMING TRAFFIC AT AN ANGLE OF 45° RELEVANT TO THE ROAD.



CLINKSCALES MAUGHAN-BROWN

CONSULTING MECHANICAL & ELECTRICAL ENGINEERS

PORT ELIZABETH EAST LONDON
CLINKSCALES MAUGHAN-BROWN (SOUTH) (PTY) LTD (2012/675108/07)

39 Victoria St
George 6529
PO Box 2551
George 6530
Tel: + 27 44 874 1511
Fax: + 27 44 874 1510
cmb@cmbgeorge.co.za
www.clinkcales.co.za



COPYRIGHT. ALL RIGHTS RESERVED.

NO PART OF THIS DOCUMENT MAY BE REPRODUCED OR TRANSMITTED IN ANY FORM OR BY ANY MEANS, ELECTRICAL OR MECHANICAL, INCLUDING PHOTOCOPYING, RECORDING OR ANY INFORMATION STORAGE AND RETRIEVAL SYSTEM, WITHOUT PERMISSION IN WRITING FROM THE AUTHOR.

CLIENT

KOUGA MUNICIPALITY

PROJECT
**ELECTRIFICATION OF 259 HOUSES AT
KRUISFONTEIN IN HUMANSDORP
(DMRE WORK 2023/24)**

DRAWING TITLE

**PROJECT NOTICE BOARD
SUPPORT STRUCTURE DETAIL**

DRAWN
MvM

SCALE
N.T.S.

DESIGNED
GSA

DATE
15/05/2023

CHECKED
GSA

CAD REF No.
10599-E-25

APPROVED

DWG-SIZE
A4

DRAWING NO

10599/E/25

REVISION